

# MT-X1840

TECHNICAL DATA SHEET

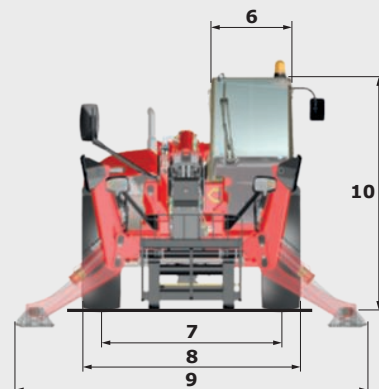
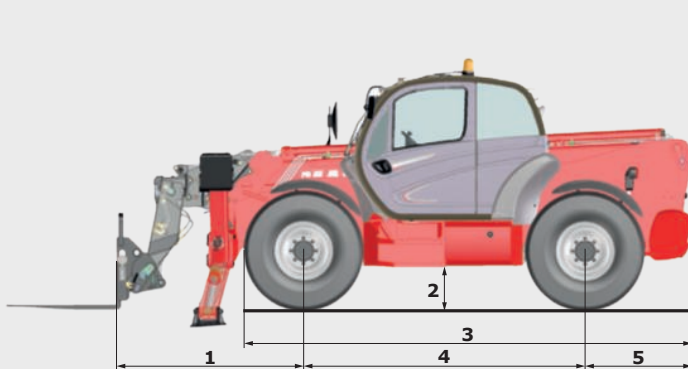


 **MANITOU**

[www.manitou.com](http://www.manitou.com)

# MT-X1840

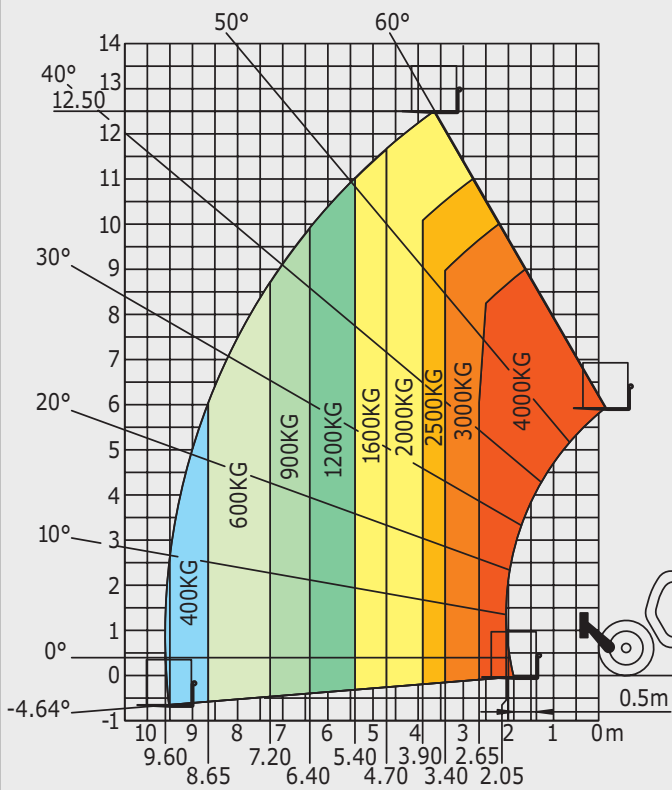
	MT-X 1840	MT-X 1840 A
<b>Lifting</b>		
Max. capacity		4000 kg
Max. lifting height		17.55 m
Reach at max. height		0.92 m
Break-out force with bucket	7500 daN	8400 daN
<b>Unladen time</b>		
Lifting	17.3 secs	18.0 secs
Lowering	12.7 secs	14.4 secs
Extension	16.1 secs	17.9 secs
Retraction	15.6 secs	16.5 secs
Crowd		5 secs
Dump		4 secs
<b>Tyres</b>		400/80-24
<b>Braking</b>	hydraulic multiple-disk brake with oil bath on front and rear axles	
<b>Engine</b>	PERKINS - STAGE 3A	
Type	1104D-44TA	
Cubic capacity	4400 cm <sup>3</sup>	
Power	101 HP/74.5 kW	
Max. torque	400 Nm - 1400 rpm	
Injection	direct	
Cooling	water	
Laden drawbar pull	10000 daN	
<b>Transmission</b>	torque converter	
Reversing shift	electrohydraulic control	
Number of gears (forward/reverse)	4/4	
Max. travel speed (may vary according to applicable regulations)	27 kph	
<b>Hydraulics</b>		
Pump	gear type with flow splitter - 170 l/min - 270 bar	
<b>Capacities</b>		
Hydraulic oil	175 l	
Fuel	140 l	
<b>Unladen weight (with forks)</b>	11600 kg	12300 kg
<b>Dimensions</b>		
<b>1.</b> Front wheel centre to carriage	2.04 m	
<b>2.</b> Ground clearance	0.42 m	
<b>3.</b> Overall length to front tyres	4.89 m	
<b>4.</b> Wheelbase	3.07 m	
<b>5.</b> Rear wheel centre to rear face	1.16 m	
<b>6.</b> Overall width of cab	0.89 m	
<b>7.</b> Inside tyre width	1.96 m	
<b>8.</b> Overall width	2.42 m	
<b>9.</b> Overall width (stabilizers lowered)	3.79 m	
<b>10.</b> Overall height	2.45 m	
Turning radius (over tyres)	4.01 m	
Frame levelling	+/- 9°	
Carriage rotation (crowd/dump)	12°/114°	
<b>Noise and vibration</b>		
Noise at driving position (LpA)	82 dB	
Environmental noise (LwA)	106 dB	
Vibration to whole hand/arm	<2.5 m/s <sup>2</sup>	
Vibration on driver's body	0.985 m/s <sup>2</sup>	



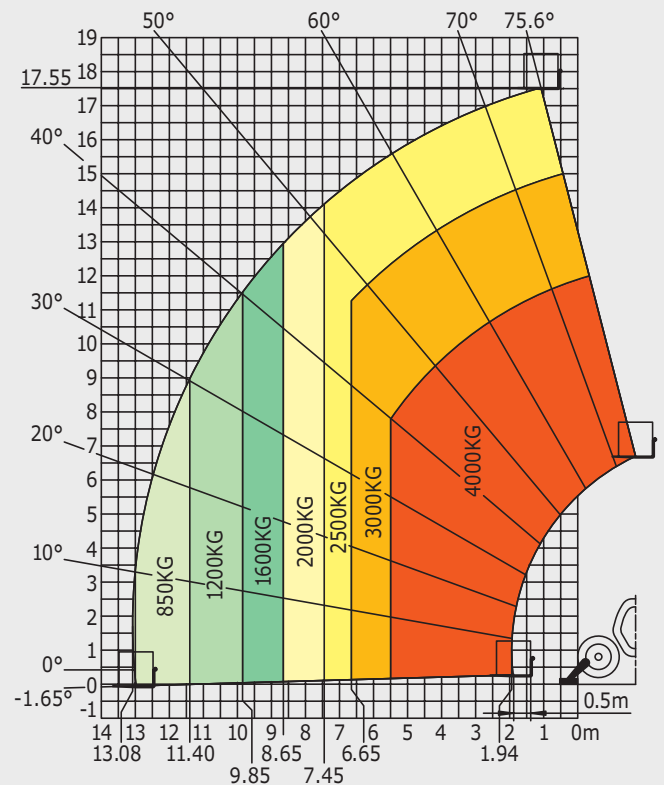
# MT-X1840

## Rough Terrain Load Chart standard EN1459 B

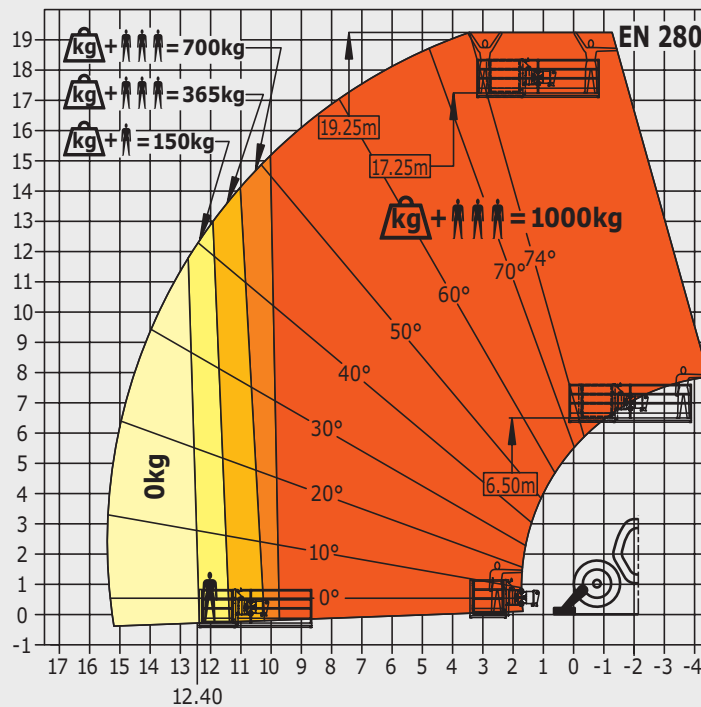
### Machine on tyres with forks



### Machine on stabilizers with forks



### Machine on stabilizers with platform (MT-X 1840 A versions)



This brochure describes versions and configuration options for Manitou products which may be fitted with different equipment. The equipment described in this brochure may be standard, optional or not available depending on version. Manitou reserves the right to change the specifications shown and described at any time and without prior warning. The manufacturer is not liable for the specifications given. For more information, contact your Manitou dealer. Non-contractual document. Product descriptions may differ from actual products. List of specifications is not comprehensive. The logos and visual identity of the company are the property of Manitou and may not be used without authorisation. All rights reserved. The photos and diagrams contained in this brochure are provided for information only.

MANITOU BF SA - Limited company with board of directors - Share capital: 39,547,824 euros - 857 802 508 RCS Nantes

