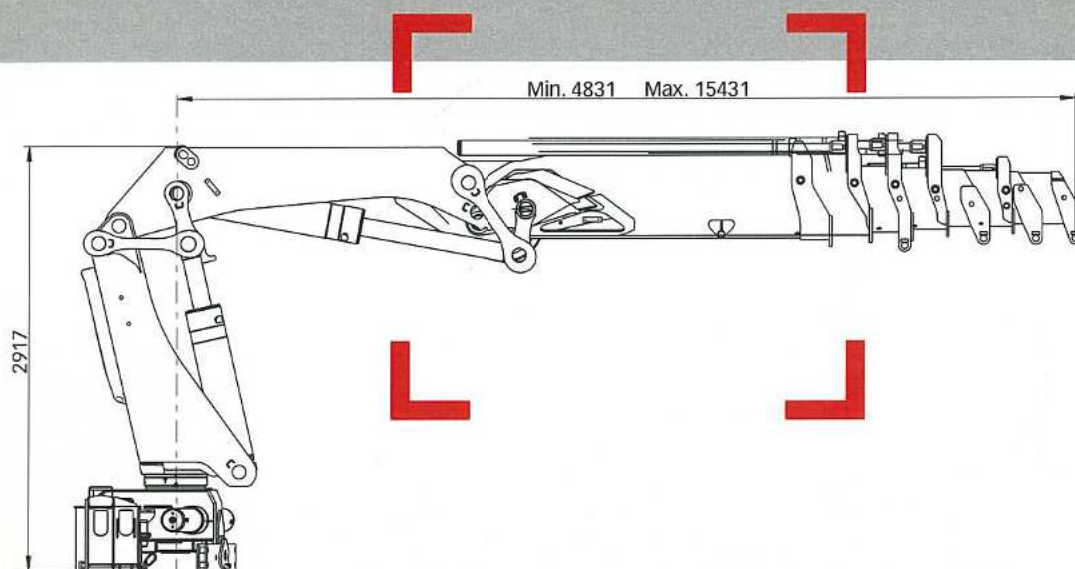


# HIAB 477 CLX Basic data

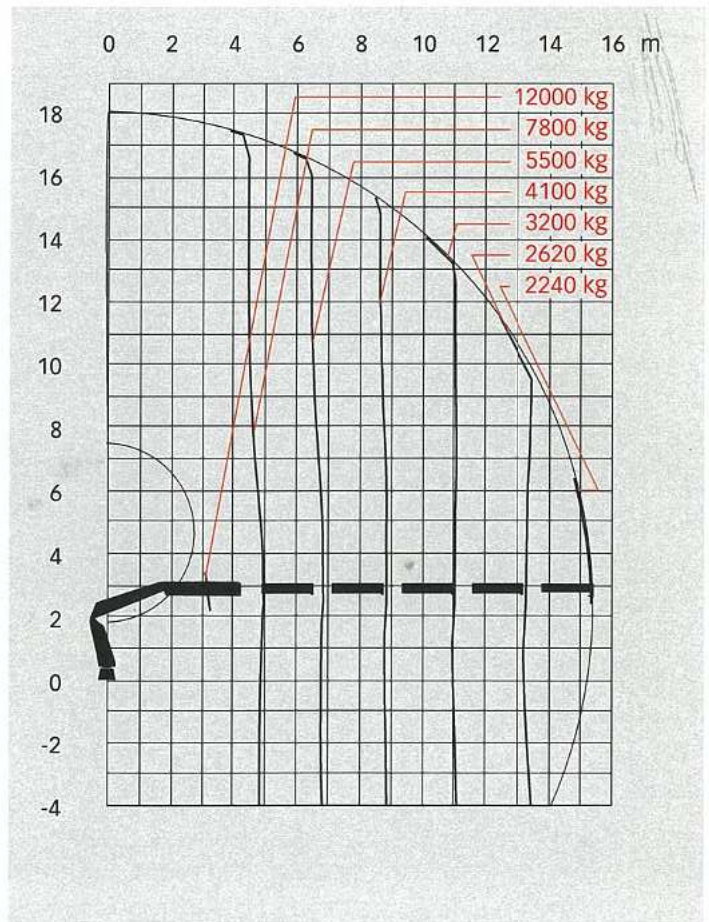
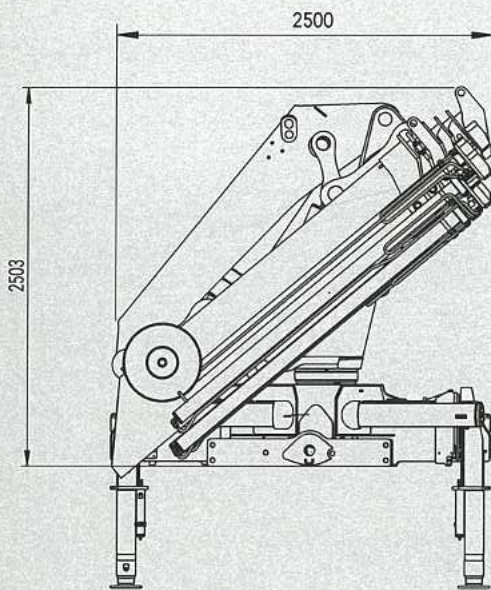
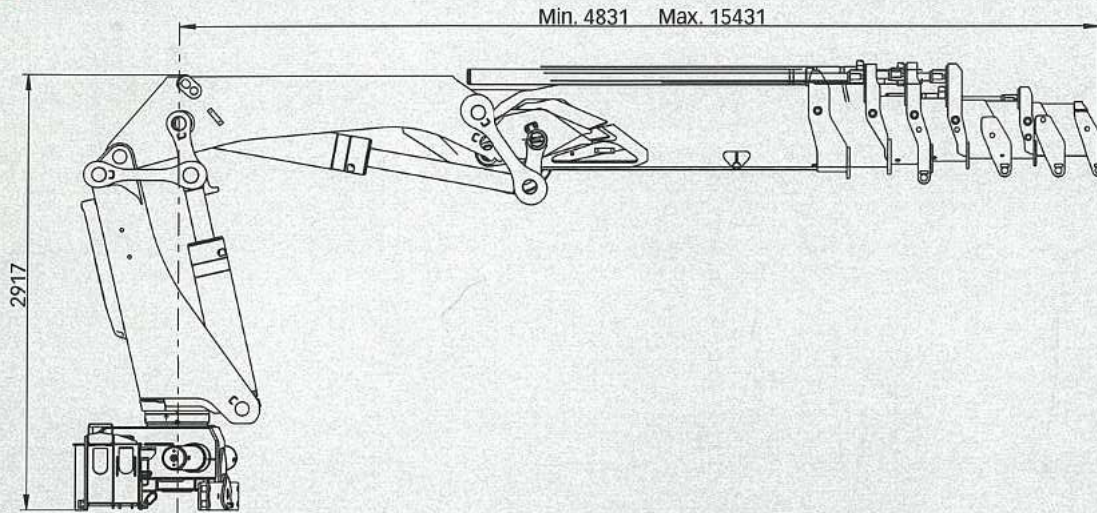
<b>&gt; Technical data</b>	<b>EP-2 CLX</b>	<b>EP-3 CLX</b>	<b>EP-4 CLX</b>	<b>EP-5 CLX</b>
Max. lifting capacity (kNm)	395	387	381	376
Outreach - hydraulic extensions (m)	8.4	11.0	13.2	15.4
Outreach / Lifting capacity, standard (m / kg)	3.2 / 12000	3.2 / 12000	3.1 / 12000	3.1 / 12000
	4.5 / 8900	4.9 / 8100	4.9 / 7900	4.9 / 7800
	6.4 / 6300	6.8 / 5700	6.8 / 5600	6.8 / 5500
	8.4 / 4800	8.8 / 4350	8.8 / 4200	8.8 / 4100
	-	11.0 / 3450	11.0 / 3300	11.0 / 3200
	-	-	13.2 / 2760	13.2 / 2620
	-	-	-	15.4 / 2240
Slewing angle	400°	400°	400°	400°
Height in folded position (mm)	2404	2503	2503	2503
Width in folded position (mm)	2500	2500	2500	2500
Installation space needed (mm)	1471	1471	1471	1471
Weight - "standard" crane without stabilizers (kg)	3650	3910	4120	4390
Weight - stabilizer equipment (kg)	630-840	630-840	630-840	630-840

# HIAB XS 477 CLX Capacity 40 tm



Basic data

➤ **HIAB XS 477 EP-5 CLX**



**Disclaimer**

Hiab cranes have been built to meet the highest standards of safety and service life and have been thoroughly tested. Strength calculations for this model have been carried out in accordance with EN13001. Hiab's certified Quality Assurance System complies with the ISO 9001. Some of the items in our literature may be extra equipment. Certain applications may require an official permit. We reserve the right to change technical specifications without prior notice. Hiab cranes produced for EU-countries are CE-marked and comply with the European Standard EN 12999.