

# Wheel dumpers



**WACKER  
NEUSON**  
*all it takes!*



## These reasons speak for wheel dumpers from Wacker Neuson.

### 1. Tackle challenges – and easily master them.

You may not be able to choose the terrain, but you can choose your machine. Wacker Neuson's wheel dumpers can carry out any task even on the most difficult of terrains. The articulated pivot joint provides high off-road capability and excellent traction on any surface.

### 2. The best conditions for performance – a strong hydrostatic drive system.

Technologies must prove themselves in application every single day. Wacker Neuson's wheel dumpers are equipped with high quality drives, which provide reliable performance and will impress you with their user-friendly operation.

### 3. Tried and tested over the years – optimized together.

Our many years of experience and close co-operation with our customers in product development make our wheel dumpers sought-after helpers on every construction site. For many years to come.

### 4. Flexibility and reliability – the hallmark of our wheel dumpers.

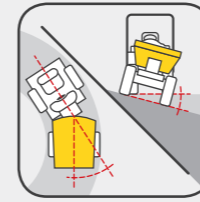
The wheel dumpers from Wacker Neuson are not only durable, sturdy and extremely reliable, but can also be used universally, thanks to a large amount of configuration options. Different types of skips and other options allow the machine to be configured to your needs. These include everything from air conditioning in the cab to the Speed version. We are happy to advise you and ensure that each of your wheel dumpers provides you with reliable and powerful transportation of material.

#### Wacker Neuson—all it takes!

We offer products and services rendered that meet your high requirements and diverse applications.

Wacker Neuson stands for reliability. This of course also applies to our wheel dumpers. We do our best every day to ensure your success. And we do this full of passion.

## Transport expertise to the last detail.



### Travel effortlessly over any terrain

Neither narrow passages nor uneven surfaces can stop Wacker Neuson's wheel dumpers: thanks to the articulated pivot joint, they are able to go anywhere.

Read more on page 15.



### Drive without shifting gears

With the pedal, everything is under control: the hydrostatic drive makes driving simple and makes switching unnecessary in many cases.

See page 25 details.



### EQUIPCARE

### Locate wheel dumpers anytime

With the Global Monitoring System you can always determine the exact location of your machines.

### Always the right skip

With a wide range of skip versions, the wheel dumpers are well-equipped for many applications. Light materials skip and special skips are also available.

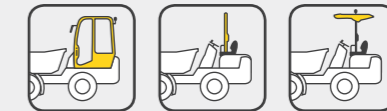
An overview of all skip types can be found on page 35.



### Full safety with cab, canopy or roll over bar

Choose between the safety cab with ROPS/FOPS Level II with integrated heater and optional air-conditioning system, canopy for perfect protection against sun or rain and the roll over bar with ROPS (roll over protection system) and practical sunshield.

Read more on page 19.



## Overview of all wheel dumpers.

All details about our wheel dumpers are also available online at: [www.wackerneuson.com/dumper](http://www.wackerneuson.com/dumper)



DW15e

Maximum payload:

1,500 kg

> Page 04



1001

1,000 kg



1501

1,500 kg

> Page 08



1601

1,500 kg



2001

2,000 kg



3001

3,000 kg

> Page 12



4001

4,000 kg



DW50

Maximum payload:

5,000 kg

> Page 16



DW60

6,000 kg



DW90

9,000 kg

> Page 20



DW100

10,000 kg



DV60

6,000 kg



DV90

9,000 kg

> Page 26



DV100

10,000 kg

Simply start and off you go: thanks to the electric drive system, no frequent gear changing is required and the operator can focus entirely on his task. Thereby the drive system and the work hydraulics can be operated independently of each other

As powerful as a conventional wheel dumper, but extremely quiet – ideal in noise-sensitive environments

Can be charged at a 230-V-outlet



## Carry material away cleanly: the electric wheel dumper DW15e.

	DW15e
Max. payload (kg)	1,500
Battery, capacity/power (Ah / kWh)	300 / 14.4
Width (mm)	1,305
Max. skip capacity heaped (l)	800
Skip versions	



**Optional with equipment for the road:** mirror, reversing alarm, lighting

**Fold-over roll over bar**

**Multi-functional display:** all functions and battery charging status at a glance

**Broad protection at leg height,** e.g. against moving parts, falling rocks, branches etc.

**Large control stand** with ample space and legroom for the operator

**Different dumping heights** are not a problem, thanks to the high tip skip

**Optionally available with swivel tip skip** – ideal for working on trenches and slopes

**Many fields of application by electric drive,** e.g. indoors or on urban construction sites

**Quick and easy maintenance access**

**Gradeability up to 50°** ensures safety and stability on steep terrain

**Ideal for uneven ground conditions:** high ground clearance

**Tractor tread** for maximum safety and traction, optional even with turf tires

## Transport material completely free of emissions.

- ✓ One battery charge is enough for working a whole workday (depending on the type of application)
- ✓ Maintenance-free 48-V battery and integrated battery charger
- ✓ Just charge at a 230-V-outlet
- ✓ The dimensions and power ratings are the same as our conventional dumper 1501
- ✓ Significantly lower noise emissions – ideal for many noise-sensitive areas
- ✓ Drive system and work hydraulics each have their own electric motor
- ✓ Energy recovery when braking and going downhill



**Double-sided ascent and descent** for maximum safety in every construction site situation.



**Low operating and maintenance costs** due to low-maintenance electric drive.



**Compact dimensions** enable efficient work in a small space, fast turning maneuvers and easy transport.



**DW15e is easy to transport** thanks to its optimally placed lifting lugs and light weight.



**Confident on any terrain** thanks to articulated pendulum joint and 4 wheel drive.








1001 1501 1601

Low-maintenance, stepless twin-lock-4 wheel drive makes working in difficult ground conditions easy

The articulated pendulum joint adapts to all bumps and keeps the dumper stable in every situation

Compact dimensions make the wheel dumpers extremely maneuverable – ideal in confined spaces

## Compact, safe and versatile: the wheel dumpers 1001, 1501, 1601.

	1001	1501	1601
Max. payload (kg)	1,000	1,500	1,500
Engine output (kW/HP)	18.9/25.7	18.9/25.7	18.9/25.7
Width (mm)	1,180	1,305	1,305
Max. skip capacity heaped (l)	525	800	1,044
Skip versions	 	 	  

**Different dumping heights** are not a problem, thanks to high tip skip

**Optional with equipment for the road:** mirror, reversing alarm, lighting

**Clear instrument panel:** all displays and operator's controls are easily accessible

**Stage-5-certified** for minimum pollutant emission

**Rotating beacon** for optimum visibility for road users and construction site personnel

**Reversing alarm and mirror** for optimum all-round visibility and more safety on the construction site



**Maximum traction and safety** thanks to tractor tread

**High gradeability** for material handling in steep ground conditions without restrictions

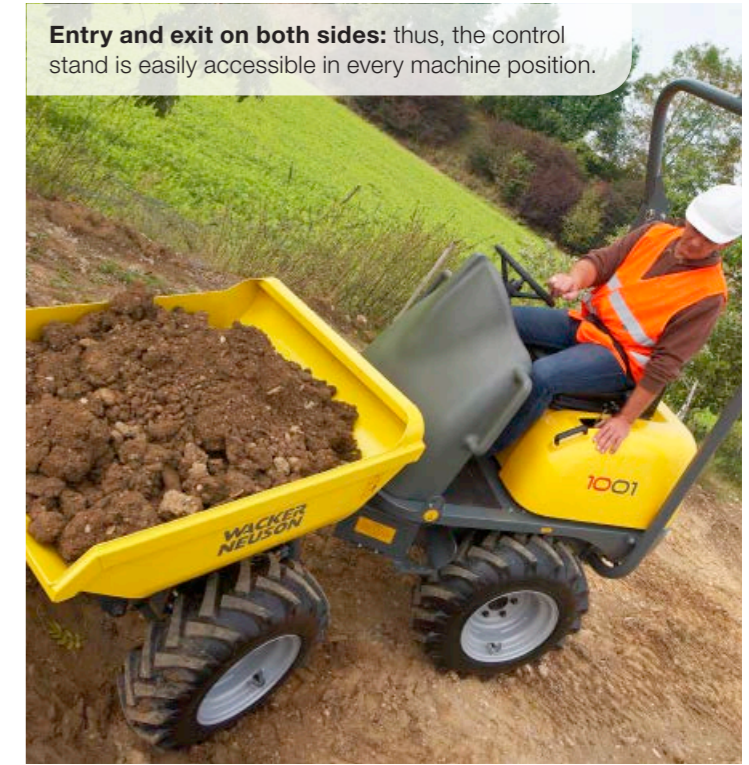
**High ground clearance** also makes off-road application off the construction site possible

**Standard with hitch device** – for maneuvering on the construction site, optionally available with plug receptacle

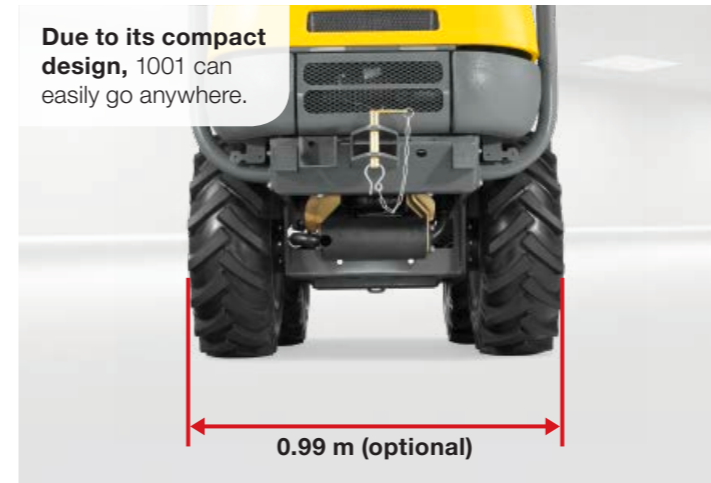
**Easy operation, less wear:** the hydrostatic twin-lock 4 wheel drive saves time and money.



**Entry and exit on both sides:** thus, the control stand is easily accessible in every machine position.



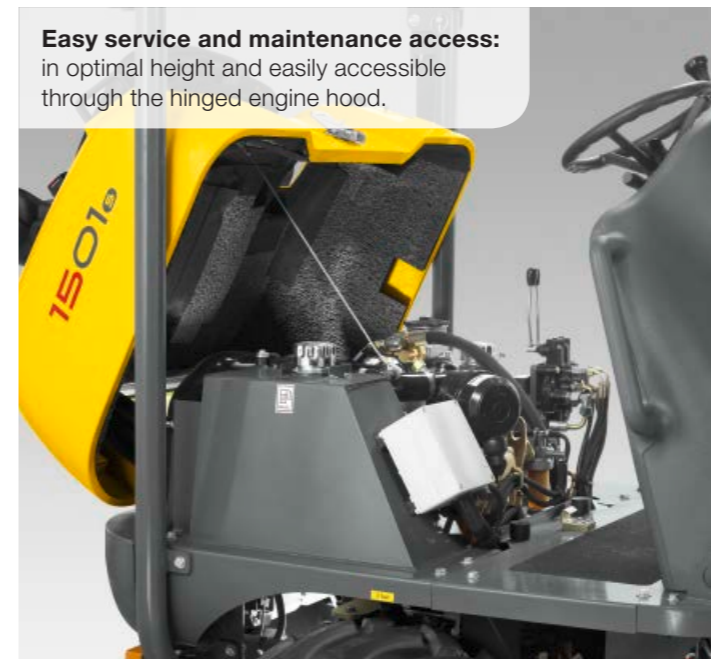
**Due to its compact design,** 1001 can easily go anywhere.



**Fold-down roll over bar:** ideal for low headroom or during transport.

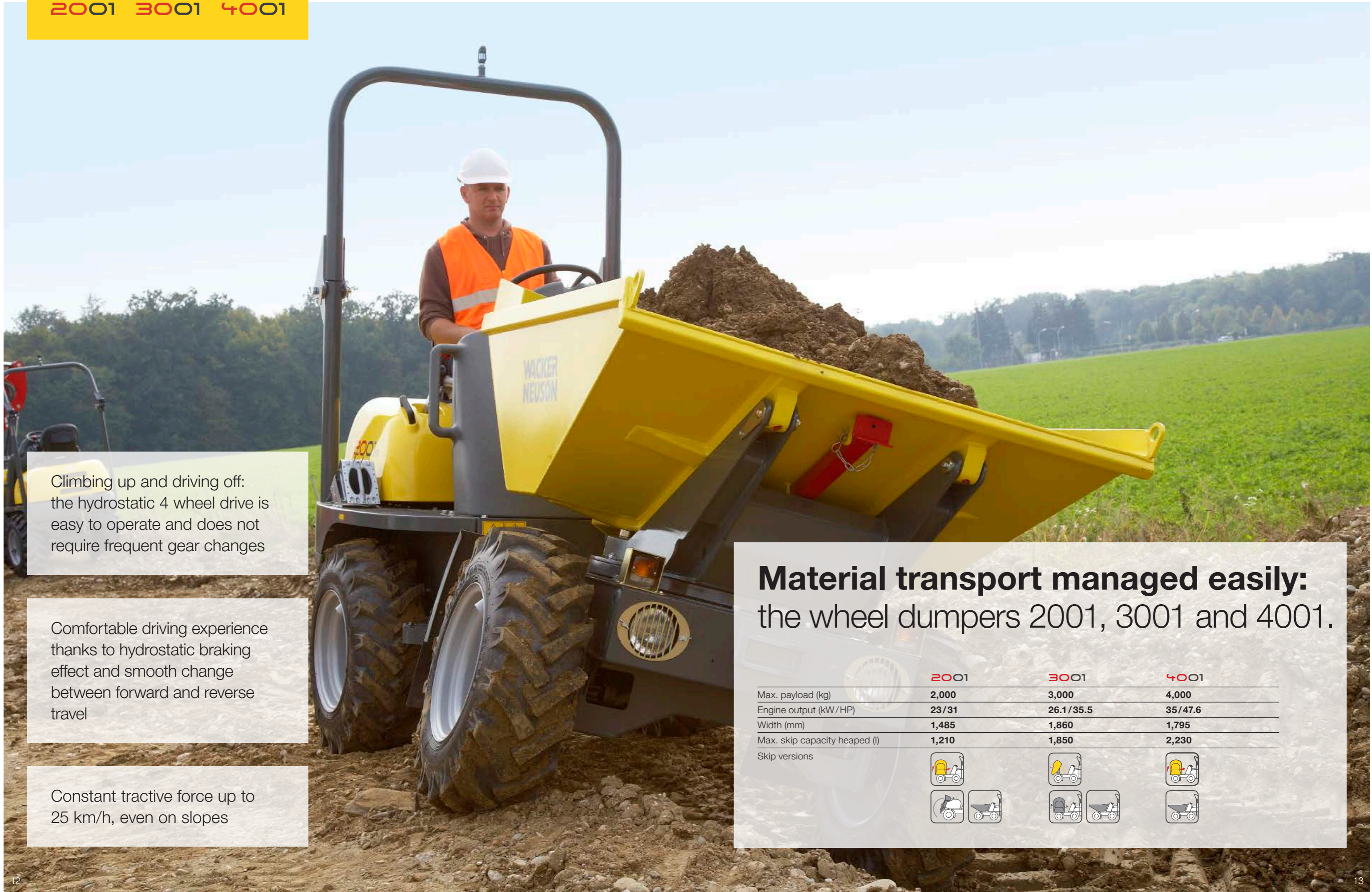


**Easy service and maintenance access:** in optimal height and easily accessible through the hinged engine hood.



**Tipping on the point:** the swivel tip skip can be rotated steplessly around 180°.











Climbing up and driving off: the hydrostatic 4 wheel drive is easy to operate and does not require frequent gear changes

Comfortable driving experience thanks to hydrostatic braking effect and smooth change between forward and reverse travel

Constant tractive force up to 25 km/h, even on slopes

## Material transport managed easily: the wheel dumpers 2001, 3001 and 4001.

	2001	3001	4001
Max. payload (kg)	2,000	3,000	4,000
Engine output (kW/HP)	23/31	26.1/35.5	35/47.6
Width (mm)	1,485	1,860	1,795
Max. skip capacity heaped (l)	1,210	1,850	2,230
Skip versions	 	 	 

**Compact dimensions**  
offer high maneuverability in a small space and flexible transport options

**Everything in view, everything under control:** clear instrument panel with clear operator's controls

**Sun shade canopy**  
optional

**Reversing alarm and mirror**  
improve the all-round visibility and minimize the blind angles

**Wide leg protection**  
prevents external influences, such as falling rocks, branches or parts of the cargo



**Different tires for choice:**  
industrial tires for road and construction site, tractor profile for maximum traction, turf tires with wide contact surface

**Access from either side** for safe ascent and descent in all machine positions

**Standard hitch device**, optionally available with plug receptacle

**Optional with equipment for the road:** mirror, reversing alarm, lighting

**Side unloading to the point:** with swivel tip skip and stepless 180°-tilting is not a problem.



**More maneuverable and flexible than a truck:** our dumpers are an indispensable part of many construction sites.



**Gradeability up to 45°** enables safe working, even in very steep ground conditions.



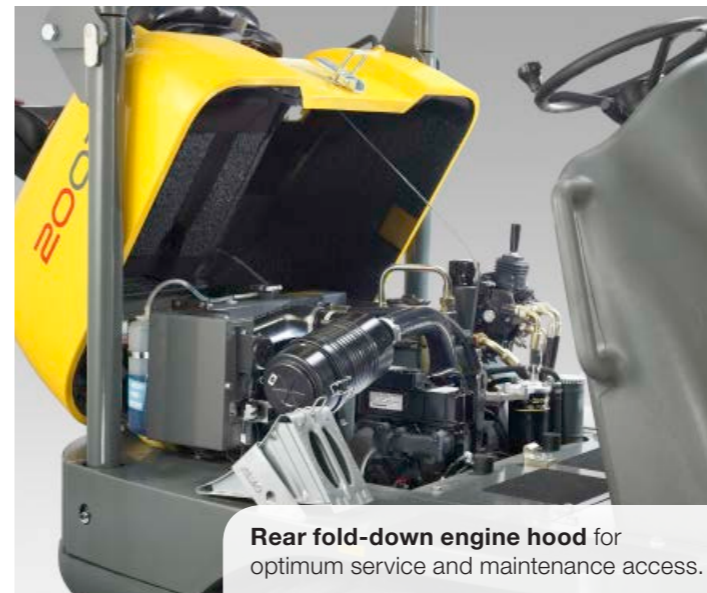
**Independent loading without further machines –** with the self-loading equipment of the 2001.



**High level of driving comfort** due to a wide control stand and intuitive operating concept.



**Rear fold-down engine hood** for optimum service and maintenance access.







Low-wear hydrostatic 4 wheel drive with ECO mode is pleasant to drive and reduces operating costs

The most powerful engine of its class

Everything perfectly under control thanks to a clear instrument panel and intuitive joystick operation

## Great technology, compact dimensions: the wheel dumper DW50.

	DW50
Max. payload (kg)	5,000
Engine output (kW/HP)	55.4/75.3
Width (mm)	1,915
Max. skip capacity heaped (l)	2,650
Skip versions	



**Optional seat contact switch**

for maximum safety - prevents starting or stops the machine when the operator stands

**Stage-5-certified** for minimum pollutant emission

**Removable sun shade canopy** for the version with ROPS bar

**Fold-over roll over bar** ideal for low passages and for space-saving transport

**Stepless up to 28 km/h** for fast, smooth position change



**Hitch device,** optionally available with plug receptacle

**Simple service access** through the rear fold-down engine hood in perfect working height

**On any ground conditions at home** thanks to high ground clearance

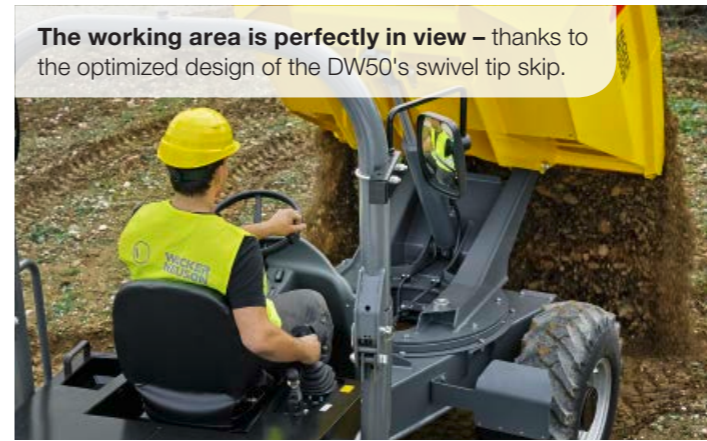
**Large control stand** with ample space for comfortable working

**Safe to get on and off** on either sides in any construction site situation

**Wide selection of tires,** e.g. tractor tread for maximum traction or industrial tires for flexible applications

**Vision camera** shows the blind angle in front of the machine

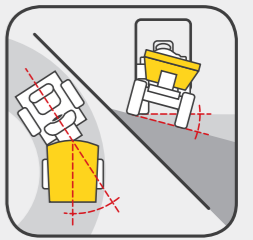
The working area is perfectly in view – thanks to the optimized design of the DW50's swivel tip skip.



**Turf tires** have large contact surfaces and thus protect the subsurface.



**Articulated pendulum joint.**



In many applications, rough terrain with bumps, small slopes, and narrow spots is a part of daily operations. For this reason, all wheel dumpers from Wacker Neuson are outfitted with an articulated pivot joint.

- Excellent off-road capability, even under load
- Depending on the model, articulated pendulum joint steering up to max. 37°/15°
- Best ground contact and excellent traction

**Control stand and operating concept.**

An innovative operating concept for control stand and seating console: all operator's controls, such as switches, the joystick or the display, are placed on the right-hand side. The left hand can thus always remain on the steering wheel!

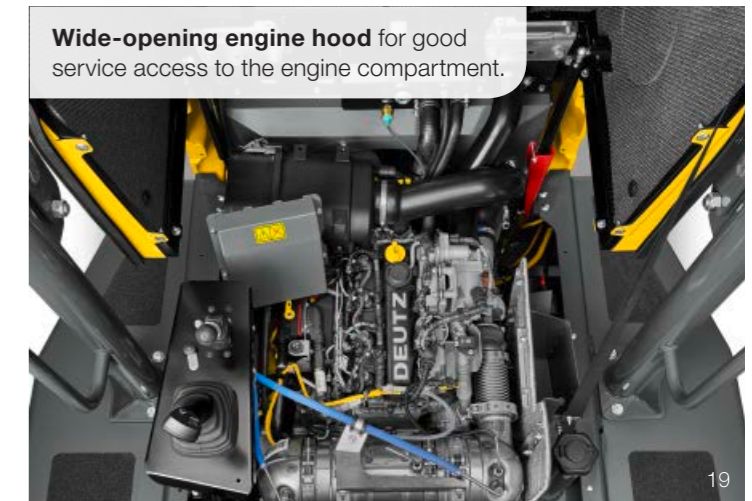
- Joystick for safe and convenient operation
- Display with service indicator for better planning
- Front view camera, rear view mirror, and optimal lighting for excellent visibility



**Fold-down roll over bar:** ideal for low passages and easy transport.



**Wide-opening engine hood** for good service access to the engine compartment.











Economical and easy to operate:  
the hydrostatic 4 wheel drive  
with ECO mode

Heatable cab (optional)  
with ROPS/FOPS-II-certification  
for comfortable and safe working  
in any weather

Completely maintenance-free  
Spring-loaded parking brake, is  
automatically activated when the  
engine is stopped

## Material handling on a large scale: the wheel dumpers DW60, DW90 and DW100.

	DW60	DW90	DW100
Max. payload (kg)	6,000	9,000	10,000
Engine output (kW/HP)	55/75	55/75	55/75
Width (mm)	2,329	2,493	2,491
Max. skip capacity heaped (l)	3,500	4,550	4,750
Skip versions	  	 	

**Sun shade canopy**  
allows comfortable working in intense heat, even without cab

**Lockable display lid** protects against vandalism and damage

**Large control stand** with ample space for the operator

**Optionally available with swivel tip skip** – ideal for working on trenches and slopes

**Standard screw-on points** for optionally available front protective grating

**Optional with equipment for the road:** mirror, reversing alarm, lighting

**Powerful diesel engine** – optional with closed diesel particulate filter – minimizes particulate emissions to protect the operator and the environment

**Front tip skip** for the economic handling of large volumes of material



**Safe ascent and descent on either sides** for flexibility on the construction site

**Front protective grating on the skip structure** protects the operator and the cab from material or excavation bucket

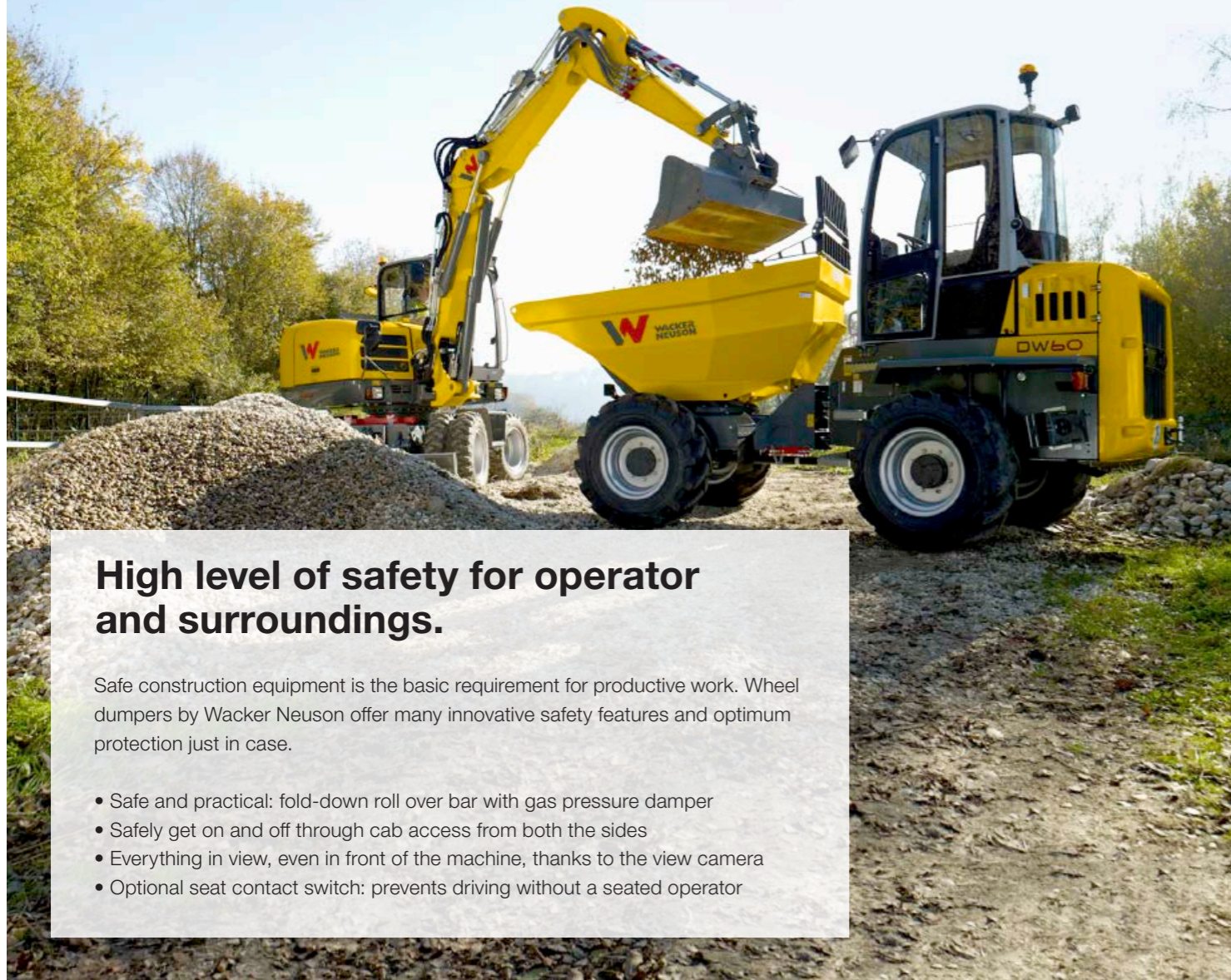
**Front and rear work lights** for perfect lighting at night and poor visibility (optional)



**Wide selection of tires:** wide-tread turf tires, industrial tires for flexible applications or tractor tread for maximum traction

**Articulated pendulum joint** for continuous ground contact in the ground conditions

**Hitch device,** optionally available with plug receptacle



## High level of safety for operator and surroundings.

Safe construction equipment is the basic requirement for productive work. Wheel dumpers by Wacker Neuson offer many innovative safety features and optimum protection just in case.

- Safe and practical: fold-down roll over bar with gas pressure damper
- Safely get on and off through cab access from both the sides
- Everything in view, even in front of the machine, thanks to the view camera
- Optional seat contact switch: prevents driving without a seated operator

**Fast, comfortable material handling** with stepless drive up to 30 km/h.



**The mountain calls? Our dumpers are coming:** with a very good climbing ability in the terrain.



**Diverse functions, one handle:** all wheel dumpers have a joystick for skip operation, gear change, change of direction and ECO-mode.



**Articulated pendulum joint:** permanent ground contact of the machine also in an inclined position.

## Maintenance made easy.

A construction machine is productive only when it is in use. That's why we do everything we can to make maintenance as efficient and cost-effective as possible, such as:

- ✓ Low-wear drives
- ✓ Long maintenance intervals
- ✓ Low service access



**The optional air-conditioning system** provides the perfect work-temperature with optimal air circulation.



**Perfect protection against rain, cold and heat:** the optionally available cab with ROPS (roll over protection system)/FOPS Level II certification.






Innovative dual view concept: 180 ° rotatable operator's seat provides optimum visibility when loading and driving

The optionally available cab in connection with the front protective grating offer the operator the best possible protection and safety

Comfortable and low wear and tear: the hydrostatic 4-wheel drive steplessly accelerates without loss of traction and gently switches between forward and reverse

## Dumper and truck in one: the wheel dumpers DV60, DV90 and DV100.

	DV60	DV90	DV100
Max. payload (kg)	6,000	9,000	10,000
Engine output (kW/HP)	55.4/75.3	55.4/75.3	55.4/75.3
Width (mm)	2,330	2,420	2,420
Max. skip capacity heaped (l)	3,600	4,600	5,000
Skip versions			

**Well equipped for night work:** with the optional work lights

**Marker lights and rotating beacon** for optimum visibility on the construction site

**Optional seat contact switch for more safety:** machine runs only with seated operator

**Fold-over roll over bar ex works** for low passages and easy transport, particularly smooth thanks to gas pressure damper

**Front tip skip** with low center of gravity for safe handling of large volumes of material

**Compact dimensions:** drives on the construction site significantly more maneuverable than a truck

**Front protective grating on skip body** protects the operator and cab against falling material in the front

**Optional with equipment for the road:** mirror, reversing alarm, safety chock, StVO accessories



**Stepless up to 30 km/h** for quick change of position and efficient material handling

**The articulated pendulum joint** adapts to any uneven terrains for maximum stability in any situation

**Level-5-certified** from summer 2019 – with diesel particulate filter for minimum particulate emissions to protect the operator and the environment

**View camera** shows the area behind the machine for more safety on the construction site

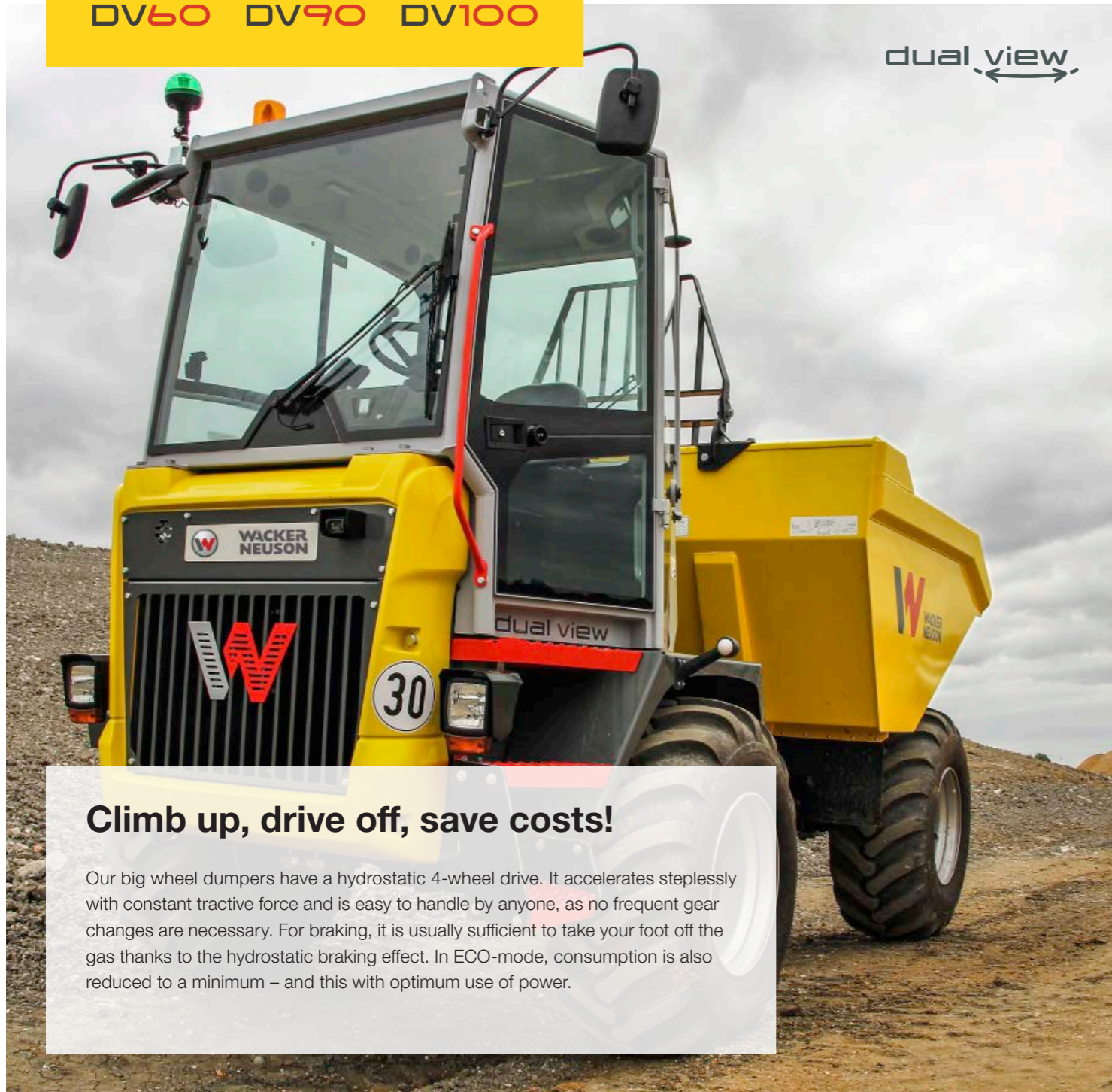
**Wide selection of tires:** wide-tread turf tires, industrial tires for flexible applications or tractor tread for maximum traction

**Hydrostatic braking function:** brake lights illuminate automatically when you exit the accelerator pedal

**Very good gradeability** enables safe work in any ground conditions

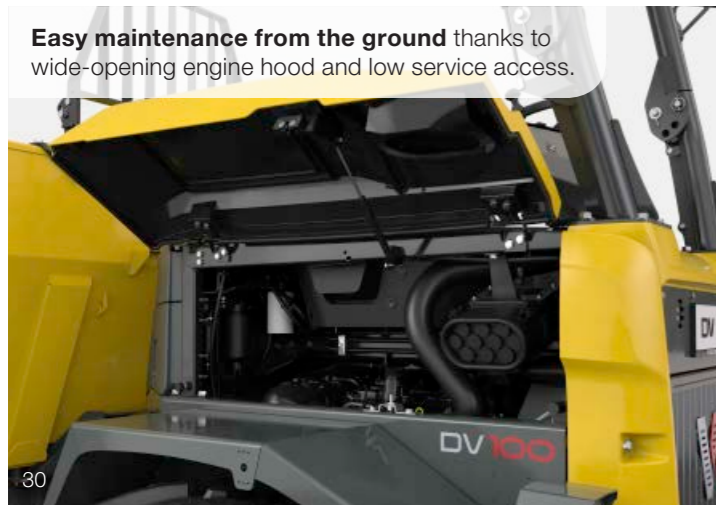
**Hydrostatic 4-wheel drive with ECO-mode** for optimum power use with minimum consumption

dual view



### Climb up, drive off, save costs!

Our big wheel dumpers have a hydrostatic 4-wheel drive. It accelerates steplessly with constant tractive force and is easy to handle by anyone, as no frequent gear changes are necessary. For braking, it is usually sufficient to take your foot off the gas thanks to the hydrostatic braking effect. In ECO-mode, consumption is also reduced to a minimum – and this with optimum use of power.



**Easy maintenance from the ground** thanks to wide-opening engine hood and low service access.



**Wear-free spring-loaded parking brake** – is activated automatically when the engine is switched off.

### Unrestricted view – especially in the main direction!



**180°-rotation of the entire driver's cabin:** release the lock, turn the seat together with the console and continue working as usual in no time.



**More safety:** always a perfect view of the working area in front of you – regardless of whether you are transporting, loading or unloading.



**Higher productivity:** operate safely and precisely even in confined spaces – there is no waste of time and fuel consumption due to maneuvering.



You can find more information about dual view at: [www.wackerneuson.com/dualview](http://www.wackerneuson.com/dualview)

### Increased operating comfort due to an ergonomic swivel console.

**Screen for standard rear view camera** with lockable vandalism protection; screen and camera meet IP69 standard

**Steering column with tilt adjustment** facilitates safe ascent and descent

**Additional storage possibility**



**Multi-functional display** for machine functions including lockable screen protector

**Joystick handle** with travel direction switch-over and dump operation

**Easy 180° rotation** – time-consuming turning maneuvers not applicable

**Rotating assembly mounted on bearings** for quick change of the sitting position



## Made for construction sites.

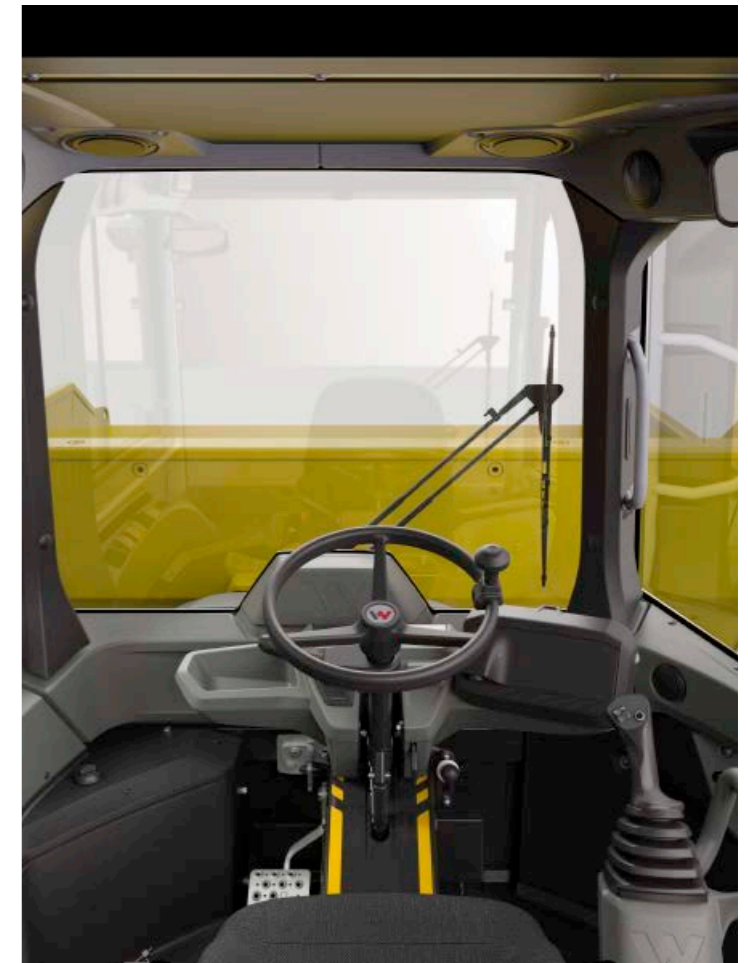
Our dual view wheel dumpers offer a unique all-round visibility while loading as well as transporting. They are extremely maneuverable, low in consumption and easy to operate – and therefore far superior to any truck within the construction site.



## Large comfort cab.

A pleasant working area is an important safety advantage. Every detail of our dumper cab is just right:

- Large control stand with ample space and legroom
- Steering wheel and operator's seat adjustable to any operator size
- Air-conditioning system for perfect working temperature and air circulation
- Clear instrument panel with intuitive joystick operation
- Tinted windows for optimum UV and noise protection
- ROPS (roll over protection system)/FOPS-Level-II-certified
- Laminated safety glass
- Indoor cab noise level only 80 dB(A)
- Comfortable working conditions
- Steering wheel-tilt adjustment
- 3-way adjustable operator's seat (angle of backrest, forward/reverse, suspension adjustable to operator's weight)
- Many storage areas
- Front sun blind



## Hydrostatic drive system.

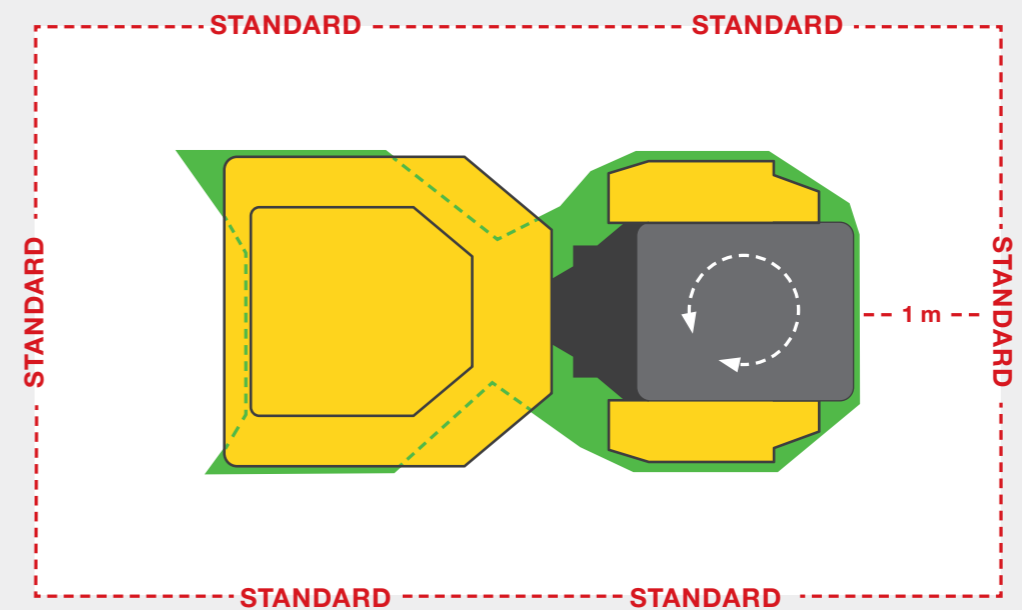
Due to the hydrostatic 4-wheel drive with constant tractive force, our wheel dumpers can be easily driven on any terrain and are very sensitive in operation. Thanks to hydrostatic braking effect, it is possible to drive with only one pedal in most situations.

*"Energy efficiency is a major topic on the construction site today. With the automatic ECO-mode of the efficient hydrostatic drive system the machine is operated with optimal power and minimum consumption."*

Dr. Robert Finzel, Managing director Wacker Neuson Linz

## Simply see more.

The dual view clearly stands above the requirements of the line-of-sight standard ISO 5006:2017.

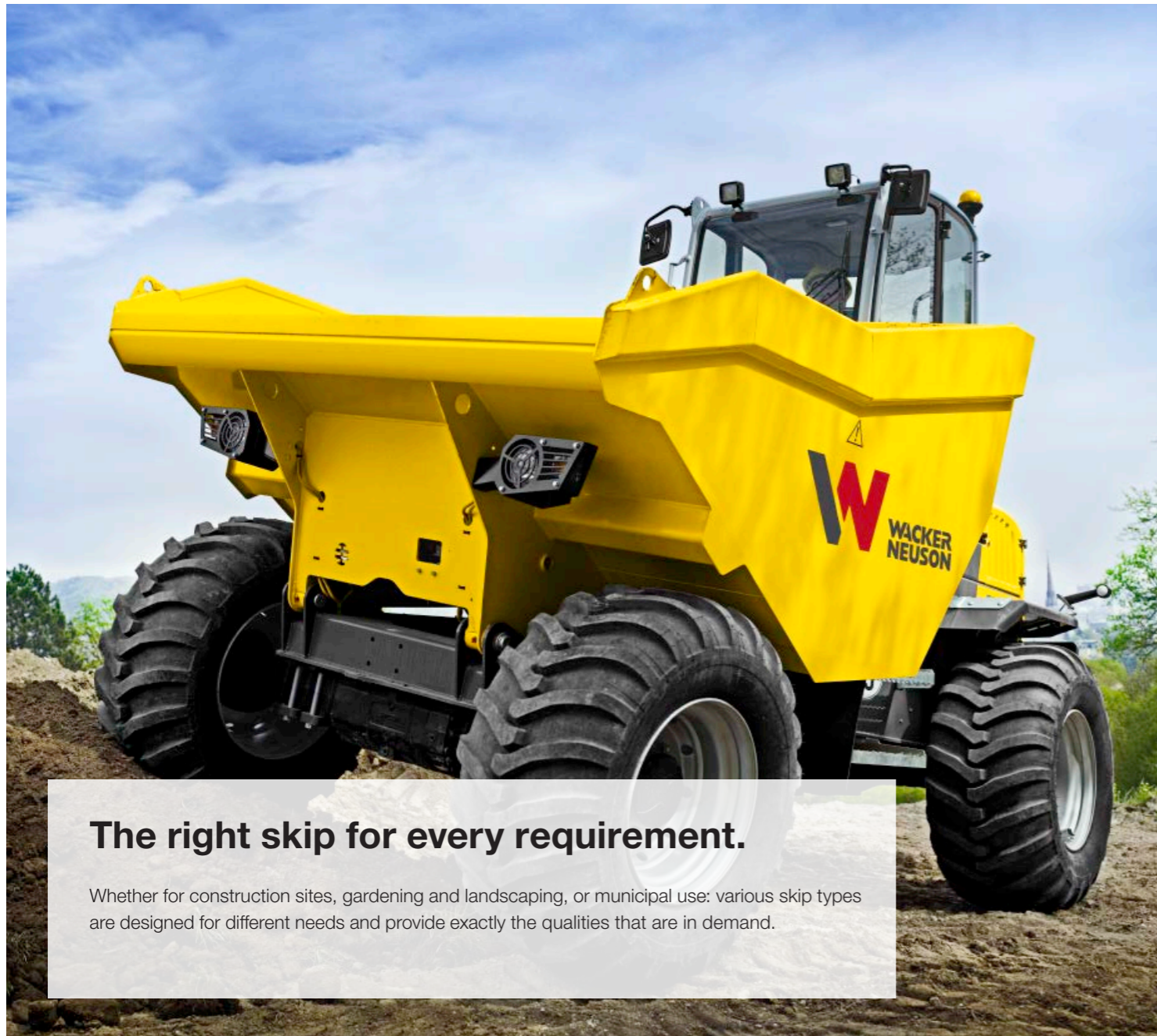


**Better than the standards!**

From here you can overlook a height of 1.2 m with the dual view\*

From here, you must be able to overlook a height of 1.2 m according to the line-of-sight standard

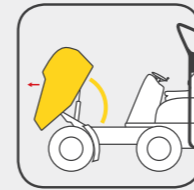
\* With mirrors and a rear view camera



## The right skip for every requirement.

Whether for construction sites, gardening and landscaping, or municipal use: various skip types are designed for different needs and provide exactly the qualities that are in demand.

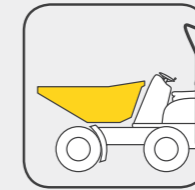
## Skip versions in overview.



### Front tip skip

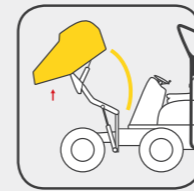
The front tip skip is ideal when a lot of material has to be transported within a short time.

- For larger material volumes up to 4.75 m<sup>3</sup>
- Low center of gravity and low tipping height
- Economical solution



### Other types of skips

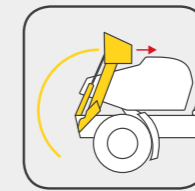
A low tipping height is important in many applications. This is exactly why the 2001 and the 3001 models have special skips. When very large volumes need to be transported, a light materials skip is recommended, which is available for the 4001 Speed.



### High tip skip

When dumping the material, if you need to bridge differences in height, the high tip skip is the right choice for you.

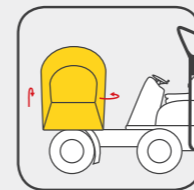
- Suitable for container loading
- Tipping height is over 1.8 m
- Flexible use as front or high tip skip



### Self-loading equipment

Entirely without other machines, lots of material can be filled in a short time with the self-loading equipment.

- Lifting of up to 300 kg material
- Independent actuation of loading arm and bucket



### Swivel tip skip

Thanks to the infinitely variable 180° tipping, the swivel tip skip puts your material exactly where you want it – ideal for limited spaces.

- Leveling when transporting liquids on slopes
- 2 x 90° swing gear left and right
- Side filling possible

More about our skips on the web:  
[www.wackerneuson.com/muldenvarianten](http://www.wackerneuson.com/muldenvarianten)



Front tip skip



High tip skip



Swivel tip skip



Self-loading equipment

# Configuration options

WHEEL DUMPERS

	DW15E	1001	1501	1601	2001	3001	4001	DW50	DW60	DW90	DW100	DV60	DV90	DV100
<b>SKIP</b>														
Asphalt skip (rotatable)	-	-	-	-	-	○	-	-	-	-	-	-	-	-
Swivel tip skip	○	-	○	○	●	○	●	●	○	○	-	○	○	-
Front tip skip	-	-	-	●	-	●	-	-	●	●	●	●	●	●
High tip skip	●	●	●	○	-	-	-	-	-	-	-	-	-	-
Light materials skip	-	○	-	-	-	-	○	-	-	-	-	-	-	-
Swivel tip skip 3 m (Switzerland)	-	-	-	-	-	-	-	-	○	-	-	-	-	-
Self-loading equipment	-	-	-	-	○	-	-	-	-	-	-	-	-	-
Special skip	-	-	-	-	○	○	-	-	-	-	-	-	-	-
<b>CAB</b>														
Cabin ROPS (roll over protection system) /FOPS Level II	-	-	-	-	-	○	-	-	○	○	○	○	○	○
Air-conditioning system	-	-	-	-	-	-	-	-	○	○	○	○	○	○
Complete radio	-	-	-	-	-	○	-	-	○	○	○	-	-	-
Sun protection roof	-	-	-	-	-	○	-	○	○	○	○	-	-	-
Fold-down ROPS bar	●	●	●	●	●	●	●	●	●	●	●	●	●	●
Fold-down ROPS-gas pressure damper	-	-	-	-	-	-	-	-	●	●	●	●	●	●
Canopy (ROPS/FOPS Level II)	-	-	-	-	-	-	-	-	-	-	-	○	○	○
Laminated safety glass VSG	-	-	-	-	-	-	-	-	-	-	-	●	●	●
Tinted windows	-	-	-	-	-	-	-	-	-	-	-	●	●	●
Vandalism protection for display	-	-	-	-	-	-	-	-	●	●	●	●	●	●
Artificial leather seat	-	-	-	-	-	-	-	-	-	-	-	○	○	○
<b>HYDRAULICS</b>														
Panolin HLP Synt46 (Bio-oil)	○	○	○	○	○	○	○	○	○	○	○	○	○	○
<b>ENGINE AND DRIVE SYSTEM</b>														
Turbo diesel engine Tier IV closed DPF	-	-	-	-	-	-	-	○	○	○	○	-	-	-
Turbo diesel engine Tier IV open DPF	-	-	-	-	-	-	-	-	○	●	●	-	-	-
25 km/h version	-	-	-	-	-	-	○	●	●	●	●	●	●	●
28 km/h version	-	-	-	-	-	-	-	○	○	-	-	-	-	-
30 km/h version	-	-	-	-	-	-	-	-	-	○	○	-	-	-
Hydrostatic all-wheel drive	●	●	●	-	●	●	●	●	●	●	●	●	●	●
Articulated frame steering	●	●	●	●	●	●	●	●	●	●	●	●	●	●
DV 30/10/15/10 km/h	-	-	-	-	-	-	-	-	-	-	-	○	○	○
DV 30/15/20/15 km/h	-	-	-	-	-	-	-	-	-	-	-	○	○	○
<b>EQUIPCARE</b>														
EquipCare including App and PC-Manager*	●	○	○	○	○	○	○	●	●	●	●	●	●	●
<b>PAINT</b>														
Special machine paint no RAL	○	○	○	○	○	○	○	○	○	○	○	○	○	○
Special paint cab/canopy RAL	-	-	-	-	-	○	-	-	○	○	○	○	○	○
Special machine paint RAL	○	○	○	○	○	○	○	○	○	○	○	○	○	○

● Standard ○ Option – Not suitable

\* Available in Germany, Switzerland, Austria, United Kingdom, Sweden, France, Denmark, Norway, Belgium, Ireland, the Netherlands and Luxembourg.

WHEEL DUMPERS

	DW15E	1001	1501	1601	2001	3001	4001	DW50	DW60	DW90	DW100	DV60	DV90	DV100
<b>EXTENDED WARRANTIES</b>														
Security 24 C (2000 h)	-	○	○	○	○	○	○	○	○	○	○	○	○	○
Security 36 C (3,000 h)	-	○	○	○	○	○	○	○	○	○	○	○	○	○
Security 48 C (4,000 h)	-	○	○	○	○	○	○	○	○	○	○	○	○	○
Security 60 C (5,000 h)	-	-	-	○	○	○	○	○	○	○	○	○	○	○
<b>TIRES</b>														
Tractor profile	●	●	●	●	●	●	●	●	●	●	●	●	●	●
Turf profile	○	-	-	-	-	-	-	○	○	-	-	○	-	-
Narrow tires	-	○	-	-	-	-	-	-	-	-	-	-	-	-
Industrial profile	-	-	-	-	-	○	○	○	○	-	-	-	-	-
Dual tires	-	○	-	-	-	-	-	-	-	-	-	-	-	-
<b>MISCELLANEOUS</b>														
Towing device	●	●	●	●	●	●	●	●	○	○	○	○	○	○
Plug receptacle towing device	○	○	○	○	○	○	○	○	○	○	○	○	○	○
Road Lights	-	-	-	-	-	-	-	-	○	○	○	○	○	○
Road traffic regulation accessories	○	○	○	○	○	○	○	○	○	○	○	-	-	-
Manufacturer confirmation	○	○	○	○	○	○	○	○	○	○	○	○	○	○
Trailer hitch (manual)	-	-	-	-	-	-	-	-	○	○	○	○	-	-
Wheel chock	-	-	-	-	○	○	○	○	○	○	○	-	-	-
TÜV road homologation (Germany)	○	○	○	○	○	○	○	○	○	○	○	○	○	○
<b>SAFETY</b>														
Front and rear work lights	○	-	-	-	-	○	-	-	○	○	○	-	-	-
Work lights rear	-	-	-	-	-	-	-	-	-	-	-	○	○	○
Side mirror (rear-view mirror)	○	○	○	○	○	○	○	○	○	○	○	○	○	○
Reverse alarm	○	○	○	○	○	○	○	○	○	○	○	○	○	○
Rotating beacon	○	○	○	○	○	○	○	○	○	○	○	○	○	○
Front window protective grating	-	-	-	-	-	○	-	-	-	-	-	-	-	-
Front protective grating of the skip structure	-	-	-	-	-	-	-	-	○	○	○	○	○	○
View camera	-	-	-	-	-	○	○	○	○	○	○	○	○	○
Seat contact switch	●	-	-	-	-	-	-	-	-	-	-	○	○	○
Entry in signal color	-	-	-	-	-	-	-	-	○	○	○	○	○	○
Road Lights	-	-	-	-	-	-	-	-	○	○	○	○	○	○
LED rotating beacon	○	○	○	○	○	○	○	○	○	○	○	○	○	○
Strap orange & flashing light LED green	-	-	-	-	-	-	-	-	-	-	-	○	○	○

● Standard ○ Option – Not suitable

# Dimensions

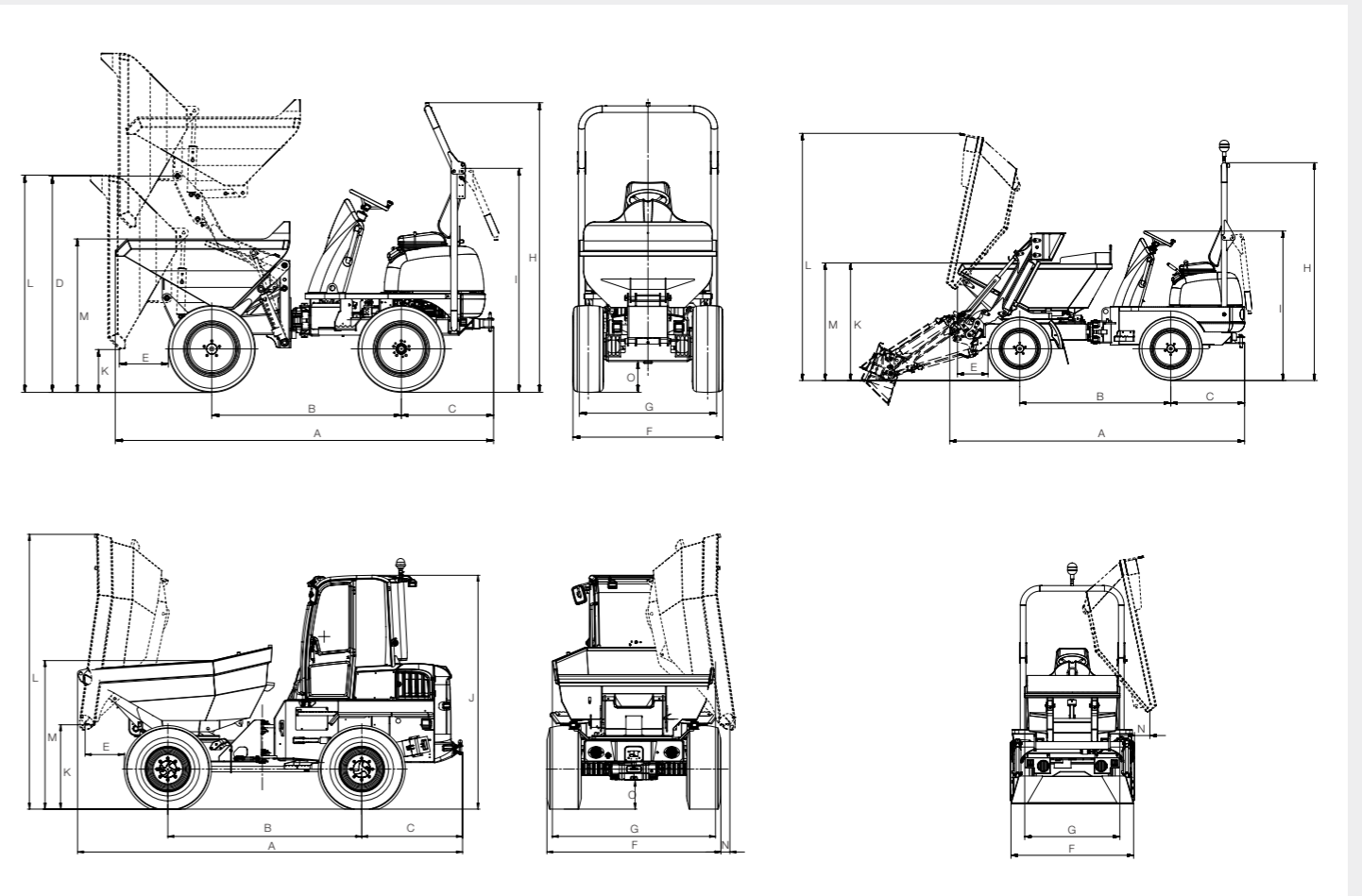
WHEEL DUMPERS

		1001		1501		1601			2001	3001			4001	DW50	DW60		DW90		DW100		
		High tip skip	Narrow	High tip skip	Swivel tip skip	High tip skip	Swivel tip skip	Front tip skip	Swivel tip skip/ low skip	Swivel tip skip	Front tip skip	Concrete skip	Low skip	Swivel tip skip/Light materials skip	Swivel tip skip	Swivel tip skip	Front tip skip	Swivel tip skip	Front tip skip		
GENERAL	UNIT																				
A	Overall length	mm	3,080		3,300	3,220	3,300	3,220	3,310	3,420/3,530***	4,240	4,080	4,500	4,305	4,200	4,495	4,935 (4,768*)	4,577	5,185	4,762	4,762
B	Wheel base	mm	1,500		1,650	1,700	1,650	1,700	1,800		1,960			1,960	2,140	2,485	2,700	2,700	2,700	2,700	2,700
C	Tail projection including hitch	mm	810		810		810		880	1,260	1,150	1,260	1,215	1,230	1,292	1,292	1,292	1,292	1,292	1,292	1,292
D	Pivot point of the high tip skip	mm	740/1,825		820/1,885	-	820/1,885	-	-	-	-	-	-	-	-	-	-	-	-	-	-
E	Tipping distance	mm	510		400	280	400	280	370	350/-	600	577	-	600	600	630	502 (490*)	609	482	556	556
F	Width of vehicle	mm	1,180	990	1,305		1,305		1,485	1,785	1,785	1,750	1,795	1,915	2,230	2,463	2,463	2,463	2,463	2,463	2,463
G	Width of skip	mm	1,130	990	1,225	1,260	1,200	1,260	1,300	1,470	1,775	1,860	1,780	1,490	1,740	1,910	2,091	2,329	2,273	2,489	2,491
H	Overall height of ROPS	mm	2,580		2,550		2,550		2,650	2,670	2,750	2,670	2,700	2,815	3,108	3,353	3,163	3,353	3,163	3,353	3,353
I	Height of ROPS folded down	mm	1,960		1,960		1,960		1,850	1,870	1,955	1,850	1,930	2,030	2,299	2,544	2,354	2,544	2,354	2,544	2,544
J	Height of cab	mm	-		-		-		-	2,610	-	2,610	-	-	-	2,993	3,243	3,053	3,243	3,053	3,243
K	Height of tipping edge Skip tipped	mm	465/1,560	465/1,140	370/1,450	680	370/1,450	680	360	1,090/-	1,020	260	380	480	1,030	1,160	1,082/1,174**	458	1,169	531	491
L	Height of skip tipped	mm	1,770/2,860	1,770/2,440	1,895/2,975	2,250	1,895/2,975	2,250	1,970	3,000/2,550	3,125	2,220	3,070	2,180	3,200	3,620	3,522	2,488	3,867	2,740	2,757
M	Height of skip not tipped	mm	1,230		1,345	1,300	1,345	1,300	1,345	1,400	1,475	1,660	1,400	1,500	1,790	1,905	1,813	2,121	2,004	2,082	2,082
N	Dumping height lateral	mm	-		-	100	-	100	-	180	245	-	740	180	270	260	115/101**	-	188	-	-
O	Ground clearance	mm	270		260		260		380	280	280	230	300	370	369	406	406	406	406	406	406

WHEEL DUMPERS

		DW15e		DV60		DV90		DV100	
		High tip skip	Swivel tip skip	Front tip skip	Swivel tip skip	Front tip skip	Swivel tip skip	Front tip skip	
GENERAL	UNIT								
A	Overall length	mm	3,300	3,214	4,448	4,699	4,622	4,891	4,660
B	Wheel base	mm	1,755		2,485		2,700	2,700	2,700
C	Tail projection including hitch	mm	746		1,157		1,157	1,157	1,157
D	Pivot point of the high tip skip	mm	1,924	-	-	-	-	-	-
E	Tipping distance	mm	375	-	565	456	520	457	549
F	Width of vehicle	mm	1,322		2,230		2,420	2,420	2,420
G	Width of skip	mm	1,234		2,328	2,218	2,497	2,453	2,504
H	Overall height of ROPS	mm	2,550		3,377		3,382	3,382	3,382
I	Height of ROPS (roll over protection system) folded down	mm	1,971		2,400		2,405	2,405	2,405
J	Height of cab	mm	-		2,940		2,945	2,945	2,945
K	Height of tipping edge Skip tipped	mm	445/1,516	740	385	1,100	357	1,168	326
L	Height of skip tipped	mm	1,966/3,038	2,276	2,463	3,639	2,723	3,980	2,723
M	Height of skip not tipped	mm	1,408/2,479	1,340	1,828	1,981	1,970	2,230	2,041
N	Dumping height lateral	mm	-	108	-	69	-	152	-
O	Ground clearance	mm	252		370		358	358	358

\* For swivel tip skip 3 m (Switzerland) \*\* Power version \*\*\* SLE



# Technical data

		1001		1501		1601			2001			3001			4001 (Speed) Swivel tip skip   Light materials skip		DW50		DW60 (LRC) [power]			DW90				
		High tip skip	Narrow	High tip skip	Swivel tip skip	High tip skip	Swivel tip skip	Front tip skip	Swivel tip skip	SLE	Low skip	Swivel tip skip	Front tip skip	Low skip	Concrete skip	Swivel tip skip	Swivel tip skip	Swivel tip skip	Swivel tip skip	Front tip skip	Swivel tip skip	Front tip skip				
<b>GENERAL</b>		<b>UNIT</b>																								
<b>Payload</b>	<b>kg</b>	1,000	8,50	1,500		1,500			2,000			3,000			2,600	3,000	4,000	3,500	4,000	5,000	6,000	6,000			9,000	
<b>Shipping weight</b>	<b>kg</b>	1,215	1,150	1,320	1,261	1,261			1,810			2,550	2,410		2,550	2,730	2,640	2,730	3,445	4,866	4,866	4,483	4,866	5,611	5,183	
<b>Skip capacity</b> struck	<b>l</b>	415		650		650		829	930	775	785	1,300	1,500	1,020	1,300	1,650	1,350	1,650	1,970	2,350	2,350	2,650	2,350	3,300	3,750	
<b>Skip capacity</b> heaped	<b>l</b>	525		800		850		1,044	1,210	1,050	1,000	1,750	1,850	1,300	1,500	2,130	1,900	2,130	2,650	3,200	3,200	3,500	3,200	4,400	4,550	
<b>Skip capacity</b> volume of water	<b>l</b>	275		420	325	420	325	612	680	550	570	900	1,160	820	1,150	1,130		1,200	1,660	1,660	1,900	1,660	2,060	2,400		
<b>ENGINE</b>		<b>UNIT</b>																								
<b>Manufacturer/model</b>	-	Yanmar 3TNV76							Yanmar 3TNV82A			Yanmar 3TNV88			Yanmar 4TNV88			Deutz TCD 2.9	Perkins 854F	Perkins 1104D		Perkins 854F	Perkins 854F			
<b>Design system</b>	-	Water-cooled 3-cylinder-diesel											Water-cooled 3-cylinder-diesel				Water-cooled 4-cylinder-diesel			Water-cooled 4-cylinder turbo-diesel						
<b>Power</b> (Iso 3046/1)	<b>kW/hp</b>	18.9/25.7		18.9/25.7		18.9/25.7			23/31.3			26.1/35.5			35/47.6			55.4/75.3	55.4/75.3	62.5/85		55.4/75.3	55.4/75.3			
<b>Displacement</b>	<b>cm<sup>3</sup></b>	1,116		1,116		1,116			1,331			1,642			2,189			2,900	2,900	4,400		3,400	3,400			
<b>Operating speed</b>	<b>min<sup>-1</sup></b>	3,000		3,000		3,000			3,000			2,800			2,800			2,300	2,400			2,500				
<b>Emissions/emission Stage</b>	-	Stage 5							ac. 97/68/EC/level 3a			ac. 97/68/EC/level 3a			ac. 97/68/EC/level 3a			Stage 3b		Stage 3a		Stage 3b				
<b>DRIVE CHARACTERISTICS</b>		<b>UNIT</b>																								
<b>Max. travel speed</b>	<b>km/h</b>	14		16		16			21			22			21	25	21	28	25			28	30			
<b>Articulation</b>	-	± 33°		± 33°		± 33°			± 37°			± 37°			± 37°			± 37°			± 29°			± 29°		
<b>Swing</b>	-	± 15°		± 15°		± 15°			± 15°			± 15°			± 15°			± 15°			± 11°			± 11°		
<b>Turning radius</b> outside	<b>mm</b>	3,200		3,300		3,300			3,500			3,650			3,730			4,250	6,000	6,000	6,150	6,000	6,550	6,800		
<b>Gradeability</b> max.	<b>%</b>	45		50		50			45			50			50			50	50			50				
<b>DRIVE SYSTEM</b>		<b>UNIT</b>																								
<b>Drive system</b>	-	4WD Twin Lock				2WD Hydrostatic				4WD Twin Lock				4WD Hydrostatic				4WD Hydrostatic including ECO mode			4WD Hydrostatic			4WD Hydrostatic including ECO mode		
<b>Tires</b>	-	10,00/75-15.3 tractor tread	6,00/16.3 tractor tread	10,00/75-15.3 Tractor tread				10,00/75-15 Tractor tread				11,50/80-15.3 Tractor tread				12.5-18/16 tractor tread	405/70-20 Tractor tread				500/60-22.5 Tractor tread					
<b>HYDRAULIC SYSTEM</b>		<b>UNIT</b>																								
<b>Drive pump</b>	-	Axial piston pump											Axial piston pump													
<b>Discharge volume</b>	<b>l/min</b>	84		135		84			168			126			112			132	152			152				
<b>Operating pressure</b>	<b>bar</b>	360		360		420			420			360			420			450	450			450				
<b>Work pump</b>	-	Gear pump																								
<b>Discharge volume</b>	<b>l/min</b>	25		25		25			25			45			45			45	68			68				
<b>Operating pressure</b>	<b>bar</b>	170		170		170			175			220			175			220	235			235				
<b>TANK CAPACITY</b>		<b>UNIT</b>																								
<b>Diesel tank</b>	<b>l</b>	15		20		20			27			40			40			50	83			83				
<b>Hydraulic oil tank</b>	<b>l</b>	20		20		20			28			48			48			40	60			60				
<b>NOISE EMISSIONS</b>		<b>UNIT</b>																								
<b>Sound power level (LWA)</b> (according to 2000/14/EG)	<b>dB(A)</b>	101		101		101			101			101			101			101	101			101				

# Technical data

		DW15e		DW100	DV60		DV90		DV100
		High tip skip	Swivel tip skip	Front tip skip	Swivel tip skip	Front tip skip	Swivel tip skip	Front tip skip	Front tip skip
GENERAL		UNIT							
<b>Payload</b>	kg	1,500		10,000	6,000		9,000		10,000
<b>Shipping weight</b>	kg	1,261		5,228	–	–	–	–	–
<b>Skip capacity</b> struck	l	650		4,100	2,350	2,700	3,300	3,750	4,150
<b>Skip capacity</b> heaped	l	800		4,750	3,150	3,600	4,350	4,600	5,000
<b>Skip capacity</b> volume of water	l	420	325	2,000	1,600	1,900	2,050	2,400	2,550
ENGINE		UNIT							
<b>Manufacturer/model</b>	–	–		Perkins 854F	Deutz TD 2,9				
<b>Design system</b>	–	–		Water-cooled 4-cylinder turbo-diesel	Water-cooled 4-cylinder turbo-diesel				
<b>Power</b> (Iso 3046/1)	kW/hp	–		55.4/75.3	55.4/75.3				
<b>Displacement</b>	cm <sup>3</sup>	–		3,400	2,900				
<b>Operating speed</b>	min <sup>-1</sup>	–		2,200	2,200				
<b>Emissions/emission standard</b>	–	100% electric		Stage 3b	Stage 3b				
DRIVE CHARACTERISTICS		UNIT							
<b>Max. travel speed</b>	km/h	14		30	28		30		30
<b>Articulation</b>	–	± 33°		±28.5°	±29°		±28.3°		±28.3°
<b>Swing</b>	–	± 15°		± 11°	± 11°		± 11°		± 11°
<b>Turning radius</b> outside	mm	3,650		6,800	5,900		6,400	6,600	6,600
<b>Gradeability</b> max.	%	45		50	55		50		50
DRIVE SYSTEM		UNIT							
<b>Drive system</b>	–	4WD electric		4WD Hydrostatic including ECO mode	4WD Hydrostatic including ECO mode				
<b>Tires</b>	–	10.0/75-15.3 industrial profile		500/60-22.5 tractor tread	405/70-20 Tractor tread		500/60-22.5 Tractor tread		
HYDRAULIC SYSTEM		UNIT							
<b>Drive pump</b>	–	Gear pump		Axial piston pump	Axial piston pump				
<b>Discharge volume</b>	l/min	10		152	123				
<b>Operating pressure</b>	bar	140		450	500				
<b>Work pump</b>	–	Gear pump							
<b>Discharge volume</b>	l/min	16.8		68	60.6				
<b>Operating pressure</b>	bar	175		235	240				
TANK CAPACITY		UNIT							
<b>Diesel tank</b>	l	–		83	80				
<b>Hydraulic oil tank</b>	l	20		60	60				
NOISE EMISSIONS		UNIT							
<b>Sound power level (LWA)</b> (according to 2000/14/EG)	dB(A)	101							

WHEEL DUMPERS

		DW15e	
		UNIT	
<b>Battery voltage</b>	V	48	
<b>Nominal capacity/power</b>	Ah/kWh	300/14.4	
<b>Battery weight</b> (± 5%)	kg	470	
<b>Charging time</b>	h	8	
<b>Running time under hard long-time application</b>	h	3.5	
<b>Running time during normal activities</b>	h	6.5	
<b>Motor drive system</b>	kW	6.5	
<b>Motor work hydraulics</b>	kW	9	

BATTERY

The Wacker Neuson product range includes over 300 different product series with different versions. The product data may vary accordingly with the selection of different options. Not all Wacker Neuson products listed or shown here are available or allowed in all countries. The Wacker Neuson products shown are examples and as such are subject to changes. We are happy to make you a specific offer upon request!

Reproduction only with the written approval of Wacker Neuson.

© Wacker Neuson SE

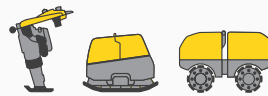


Your everyday work day is full of challenges. We have the right solutions and help you stay ahead of the competition. We offer you everything you need for this purpose: **Wacker Neuson—all it takes!**

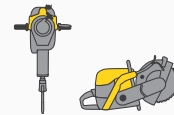
## Products



Concrete technology



Compaction



Demolition technology



Excavators



Wheel loaders



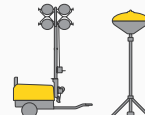
Telehandlers



Dumpers



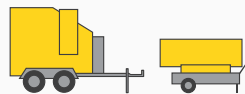
Generators



Lighting



Pumps



Heaters



Used equipment

## Services



### Financial solutions

Uncomplicated, transparent and individual financing options for you.



### Repair & maintenance

Excellent and fast maintenance. Repairs with original spare parts.



### Academy

We expand your know-how: practice-oriented and within an ideal learning environment.



### EquipCare

Everything about the machines at a glance, via app or PC – EquipCare.



### Rental

Save your liquidity and rent top-quality construction equipment as needed.



### Concrete specialists

Our specialists advise you in all project phases.



### eStore

Easily buy original spare parts online – for all Wacker Neuson product groups.

## Spare parts



### Every minute counts:

Within the shortest period of time, we deliver over 150,000 genuine Wacker Neuson spare parts to your construction site.

[www.wackerneuson.com](http://www.wackerneuson.com)



WN.EMEA.10093.V03.EN-US