

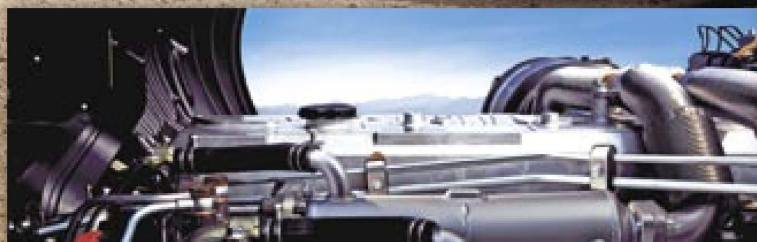


# MITSUBISHI FUSO

All for you



# SUPER GREAT FV



Standard diesel brings power to economical transportation



Urea SCR Muffler

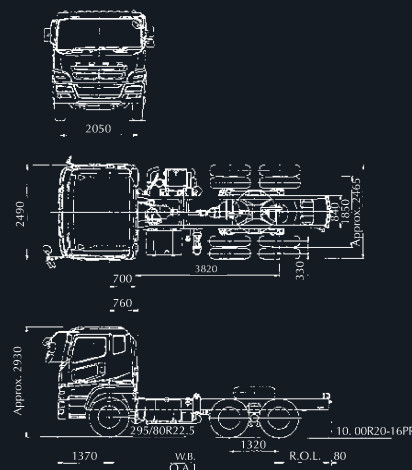


In-line 6-cylinder engine

A definitive solution to the issues faced by large trucks today, Mitsubishi Fuso's FP/FV incorporate a new engine system. Mitsubishi Fuso's proprietary engine combustion technology is combined with a urea SCR system to boost fuel efficiency. The combination delivers revolutionary performance by simultaneously enhancing fuel economy and reducing emissions of CO<sub>2</sub> and other gases to protect the environment. The new Mitsubishi Fuso's FP/FV is therefore designed to help your business succeed. In addition to the significant merits for operator seeking economy, the lower CO<sub>2</sub> levels bring big benefits to logistics customers, too.

## FV SERIES SPECIFICATIONS

MODEL	FV51JJD4RDEA	FV51JKM4RDEA	FV51JP4RDEA
Crew		3	
DIMENSIONS (mm)			
Wheelbase	4,520	4,960	6,030
Overall length (OAL)	7,280	7,720	10,220
Overall width	2,490	2,490	2,490
Overall height	2,930	2,930	2,930
WEIGHTS (kg)			
Kerb weight	8,070	8,190	8,280
Max G.V.W	28,000	28,000	28,000
ENGINE			
Type	4-Stroke Cycle Water-Cooled Common Rail Injection Turbo Charged Diesel Engine with Intercooler and EGR system		
Piston Displacement (cm <sup>3</sup> )	12,882		
Max output power	kw(PS) / rpm		
	309(420) / 2,000		
Max torque	Nm(kgfm) / rpm		
	1,810(185) / 1,100		



- Kerb weights shown are subject to 2.5% variation to allow for production tolerances.
- These specifications are subject to change without prior notice, please contact your local Mitsubishi Dealer for detailed specifications and equipment available in your market.
- Actual specifications and colors may vary from illustrations.

# ***SAFETY, CHASSIS, MAINTENANCE, ENVIRONMENT***



❖ **Transportation underpinned by high safety levels and high grade chassis**



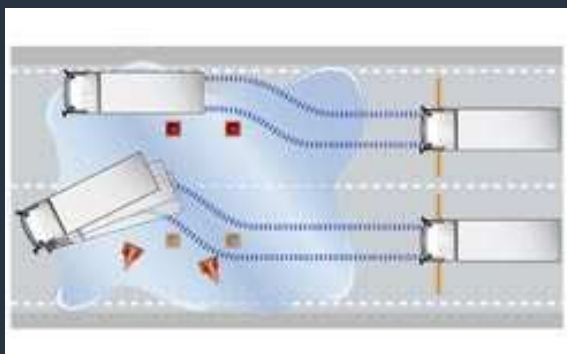
## ❖ **Airbag**

The SRS Airbag is installed in the steering wheel. In the event of front collision, the air bag immediately inflates to reduce the impact to the driver. The SRS airbag is used in conjunction with the driver's seat belt.



## ❖ **Convenient Maintenance Operations**

Partition-free front panel helps to make maintenance easier. The super cab panels are fitted with straps, making it easy to open the cab.



## ❖ **Antilock braking systems (ABS)**

All vehicles are newly fitted with ABS as standard equipment to prevent tyres from locking up under heavy braking or when braking on slippery road surfaces. This ensures safety, such that the truck can take evasive action in emergencies.



## ❖ **Environmentally Friendly Design**

All the materials used are easily recyclable and marking of plastic components are broad based to ensure efficient use of resources.

# APPLICATIONS

## MITSUBISHI FUSO FV



❖ Dump Truck



❖ Cargo Truck



❖ Mixer Truck