

# SELF-PROPELLED TELESCOPIC BOOMS | ENGINE-POWERED

## OUTSTANDING HORIZONTAL OUTREACH

Telescopic booms offer greater horizontal outreach than any other type of aerial platform — perfect for areas with limited access in construction and industrial applications. Genie® telescopic S™-booms are also designed for productivity with the traction and drive speed you need to get around the job site and to the work area. These models reach out horizontally between 31 ft 8 in (9.65 m) and 77 ft 5 in (23.60 m), with working heights of 46 ft (14.20 m) to 91 ft (27.90 m).

### GREAT FOR TIGHT SPACES

The 360° continuous rotation turntable rotates full circle for quick and flexible positioning. Minimal tailswing allows you to maneuver in tight work spaces.

### DUAL-FUEL ENGINE OPTIONS

Dual-fuel options are available for reliable, on-demand performance with the flexibility for indoor/outdoor applications. A switch on the control panels allows instant choice of gasoline or LPG operation.



### OUTSTANDING TERRAINABILITY

A revolutionary patented system automatically senses the terrain and adjusts the axle position based on ground conditions. Positive traction drive maintains equal power to all drive wheels, even if one wheel loses traction in mud, snow or sand. And two- or four-wheel drive options make it easy to drive up loading ramps for transport.

**Genie's revolutionary patented active oscillation system automatically senses the terrain and adjusts the axle position based on ground conditions.**





### SUPERIOR REACH AND POSITIONING

Exceptional horizontal outreach and a rotating, self-leveling platform allow precise positioning exactly where you need to work. For added flexibility, the articulating jib boom option gives you an extra 5 ft (1.52 m) of horizontal or vertical reach and 135° of working range.

### INDUSTRY-LEADING CAPACITY

Increase productivity with the high-capacity S™-60 HC. Its three-person capacity platform holds 750 lbs (340 kg) at the maximum horizontal outreach of 50 ft 10 in (15.48 m) or 1,250 lbs (567 kg) up to 40 ft 8 in (12.39 m). Built-in platform load and position sensing provides automatic active envelope control and peace of mind. The Genie S™-60 and S™-80 models also offer an optional 750 lb (340 kg) capacity configuration with unrestricted outreach of 50 ft 10 in (15.48 m) on the S™-60 and 72 ft 5 in (22.07 m) on the S™-80.



### MAXIMIZE PRODUCTIVITY YEAR-ROUND

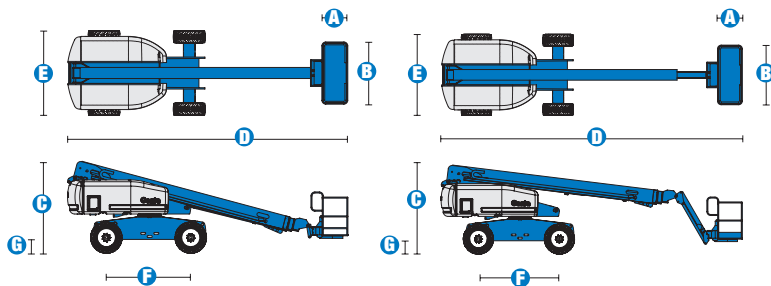
Featuring a fixed, four-point track system, the S™-60 Trax and S™-65 Trax models allow operators to maneuver in a diverse range conditions. The rubber tracks provide increased flotation and traction for traveling in mud, sand, snow, gravel, in wet or rough terrain environments, and even on sensitive outdoor surfaces. Because the new Trax models are fixed with four independent tracks, they steer like a wheeled machine to allow maneuvering close to walls and foundations. Plus, each track flexes 23° up and down for a smooth ride during operation and travel. Thanks to a machine width of 8 ft 6 in, Trax models can be transported without over-width permits.



### ENGINE-POWERED MODELS AVAILABLE

- S™-40
- S™-45
- S™-60
- S™-60 TRAX
- S™-60 HC
- S™-65
- S™-65 TRAX
- S™-80
- S™-85

# Specifications



| MODELS                                | S™-60       |         | S™-65       |         |
|---------------------------------------|-------------|---------|-------------|---------|
| MEASUREMENTS                          | US          | Metric  | US          | Metric  |
| Working height maximum*               | 66 ft       | 20.30 m | 71 ft       | 21.80 m |
| Platform height maximum               | 60 ft       | 18.30 m | 65 ft       | 19.80 m |
| Horizontal reach maximum              | 50 ft 10 in | 15.48 m | 56 ft 2 in  | 17.10 m |
| Below ground reach                    | 5 ft 7 in   | 1.70 m  | 8 ft 11 in  | 2.72 m  |
| A Platform length - 8 ft model        | 3 ft        | .91 m   | 3 ft        | .91 m   |
| Platform length - 6 ft model          | 2 ft 6 in   | .76 m   | 2 ft 6 in   | .76 m   |
| B Platform width - 8 ft model         | 8 ft        | 2.44 m  | 8 ft        | 2.44 m  |
| Platform width - 6 ft model           | 6 ft        | 1.83 m  | 6 ft        | 1.83 m  |
| C Height - stowed                     | 8 ft 11 in  | 2.72 m  | 8 ft 11 in  | 2.72 m  |
| D Length - stowed                     | 27 ft 11 in | 8.51 m  | 31 ft 2 in  | 9.50 m  |
| Length - transport (jib tucked under) | —           | —       | 25 ft       | 7.60 m  |
| E Width (with standard tires)         | 8 ft 2 in   | 2.49 m  | 8 ft 2 in   | 2.49 m  |
| F Wheelbase                           | 8 ft 2.5 in | 2.50 m  | 8 ft 2.5 in | 2.50 m  |
| G Ground clearance - center           | 1 ft 2.5 in | .37 m   | 1 ft 2.5 in | .37 m   |

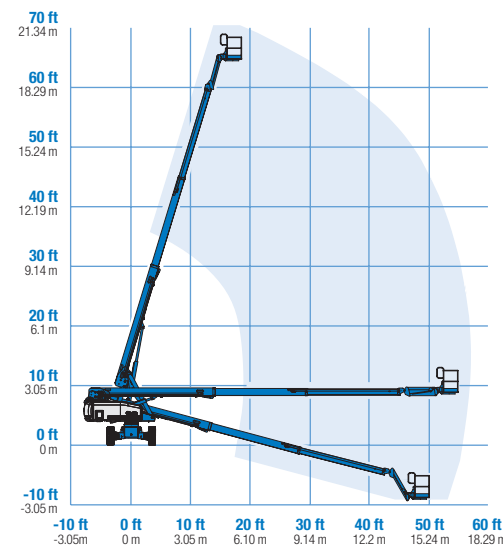
| PRODUCTIVITY                     |                      |          |                      |          |
|----------------------------------|----------------------|----------|----------------------|----------|
| Lift capacity                    | 500 lbs              | 227 kg   | 500 lbs              | 227 kg   |
| Platform rotation                | 160°                 |          | 160°                 |          |
| Vertical jib rotation            | —                    |          | 135°                 |          |
| Turntable rotation               | 360° continuous      |          | 360° continuous      |          |
| Turntable tailswing              | 4 ft                 | 1.22 m   | 4 ft                 | 1.22 m   |
| Drive speed - 2WD stowed         | 4.0 mph              | 6.4 km/h | 4.0 mph              | 6.4 km/h |
| Drive speed - 4WD stowed         | 3.0 mph              | 4.8 km/h | 3.0 mph              | 4.8 km/h |
| Drive speed - raised or extended | 0.68 mph             | 1.1 km/h | 0.68 mph             | 1.1 km/h |
| Gradeability - 2WD - stowed**    | 30%                  |          | 30%                  |          |
| Gradeability - 4WD - stowed**    | 45%                  |          | 45%                  |          |
| Turning radius - inside          | 7 ft 9 in            | 2.36 m   | 7 ft 9 in            | 2.36 m   |
| Turning radius - outside         | 18 ft 2 in           | 5.54 m   | 18 ft 9 in           | 5.72 m   |
| Controls                         | 12 V DC proportional |          | 12 V DC proportional |          |
| Tires - RT Lug                   | 355/55D 625          |          | 355/55D 625          |          |

| POWER                   |   |       |         |       |
|-------------------------|---|-------|---------|-------|
| Power source            | Ford DSG-423 4 cylinder gas/LPG 75 hp (56 kW)<br>Deutz D2011L03i 3 cylinder diesel 46 hp (34.3 kW)<br>Perkins 404D-22 4 cylinder diesel 51 hp (38 kW) |       |         |       |
| Auxiliary power unit    | 12 V DC   |       | 12 V DC |       |
| Hydraulic tank capacity | 45 gal  | 170 L | 45 gal  | 170 L |
| Fuel tank capacity      | 35 gal  | 132 L | 35 gal  | 132 L |

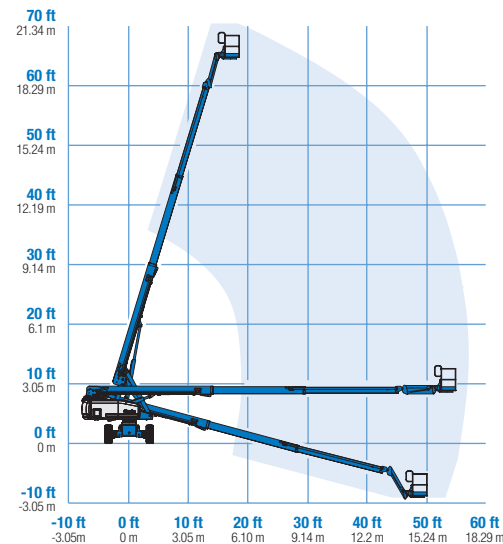
| WEIGHT*** |            |          |            |           |
|-----------|------------|----------|------------|-----------|
| 2WD       | 20,520 lbs | 9,308 kg | 22,100 lbs | 10,024 kg |
| 4WD       | 20,690 lbs | 9,385 kg | 22,270 lbs | 10,102 kg |

**STANDARDS COMPLIANCE** ANSI A92.5, CSA B354.4, CE Compliance, AS 1418.10

## RANGE OF MOTION S™-60



## RANGE OF MOTION S™-65



\* The metric equivalent of working height adds 2 m to platform height. U.S. adds 6 ft to platform height.  
 \*\* Gradeability applies to driving on slopes, see operator's manual for details regarding slope ratings.  
 \*\*\* Weight will vary depending on options and/or country standards.



# Features

## EASILY CONFIGURED TO MEET YOUR NEEDS

### PLATFORM OPTIONS

- Steel 8 ft (2.44 m) (standard)
- Steel 6 ft (1.83 m)
- Steel 6\*\* or 8 ft (1.83 or 2.44 m) tri-entry
- Steel 4 ft (1.22 m)\*\*
- Steel 5 ft (1.52 m)\*\*

### JIB OPTIONS

- Non-jib
- 5 ft (1.52 m) jib boom

### POWER OPTIONS

- Ford gas/LPG 75 hp (56 kW)
- Deutz diesel 46 hp (34.3 kW)
- Perkins diesel 51 hp (38 kW)

### DRIVE OPTIONS

- 2WD
- 4WD

### AXLE OPTIONS

- Active oscillation
- Non-oscillating

### TIRE OPTIONS

- Rough terrain air-filled (standard)
- Rough terrain foam-filled
- Rough terrain non-marking (air or foam-filled)
- High flotation air-filled
- Sealant treated air-filled

## STANDARD FEATURES

### MEASUREMENTS

#### S™-60

- 66 ft (20.30 m) working height
- 50 ft 10 in (15.48 m) horizontal reach
- Up to 500 lb (227 kg) lift capacity

#### S™-65

- 71 ft (21.80 m) working height
- 56 ft 2 in (17.10 m) horizontal reach
- Up to 500 lb (227 kg) lift capacity

### PRODUCTIVITY

- Self-leveling platform
- Hydraulic platform rotation
- Fully proportional Hall effect joystick controls
- Fuel select switch on platform and ground control panels (Gas/LPG models)
- Drive enable
- AC power cord to platform
- Tilt alarm
- Descent alarm
- Hour meter
- Horn
- 360° continuous turntable rotation
- Positive traction drive
- Two speed wheel motors

### POWER

- All engines are emissions compliant
- 12 V DC auxiliary power
- Anti-restart engine protection
- Auto engine fault shutdown
- Swing out engine tray
- Deutz intake air heater

## OPTIONS & ACCESSORIES

### PRODUCTIVITY

- 750 lbs. (340 kg) capacity (S™-60 only)
- Platform swing gate
- Half-mesh platform inserts with swing gate
- Platform top auxiliary rail
- Arc Pro 275™ Heavy-Duty Welder package
- Welder Ready package
- Weld leads to platform
- Air line to platform
- Hydraulic oil cooler
- Fire resistant hydraulic oil
- Biodegradable hydraulic oil
- Basic hostile environment kit
- Deluxe hostile environment kit
- Deluxe aircraft protection package (6 ft platform)
- Thumb rocker steer
- Tool tray
- Fluorescent tube caddy
- Pipe cradle (pair)
- Alarm package
- Panel cradle package
- Platform work lights
- Front driving lights
- Lockable platform control box covers
- Second battery
- Tow package

### POWER

- Engine gauge package
- AC generator packages (110V/60Hz, 3000W or 220V/50Hz, 2500W)
- Cold Weather Packages
- Arctic Packages
- Diesel scrubber/spark arrestor muffler
- Diesel spark arrestor muffler
- LPG tank 33.5 lb (15.19 kg) capacity
- Additional LPG tank with carrier
- Air precleaner
- Retained key selector switch

\* Available on select models

\*\* Not available on CE machines